



ICP Test Report Certification Packet

Company Name: Littelfuse, Inc.

Product Type: Metal Oxide Varistors

Product Series: DA&DB Series RoHS Compliant models

Issue Date: Dec. 20, 2011

It is hereby certified by Littelfuse, Inc. that there is neither RoHS (EU Directive 2002/95/EC)-restricted substance nor such use, for materials to be used for unit parts, for packing/packaging materials, and for additives and the like in the manufacturing processes.

In addition, it is hereby reported to you that the parts and sub-materials, the materials to be used for unit parts, the packing/packaging materials, and the additives and the like in the manufacturing processes, are all composed of the following components.

Issued by: *David Huang*

< DGLF Environmental, Health & Safety Engineer >

(1) Parts, sub-materials and unit parts

This document covers Metal Oxide Varistors LA series RoHS-Compliant models manufactured by Littelfuse, Inc.

Please see Table 1 for raw materials used.

(2) The ICP data on all measurable substances

Please see appropriate pages as identified in Table 1

Remarks :

Pb (lead) contained in copper alloy containing up to 4% is categorized as exempt under section 6 of the RoHS Annex.

Table 1: List of Raw Materials covered by this report

NO.	P/N	Raw Material Description	Page
1	N/A	DD Black Disc	3-7
2	N/A	Silver paste as internal electrodes	8-17
3	N/A	Solder paste	18-25
4	N/A	Terminals	26-29
5	N/A	Epoxy Resin PCE210 4A Red	30-36
6	N/A	Industrial Coating Resin	37-43
7	N/A	Base & Lid	44-51
8	N/A	Copper Screw, separating from Base & Lid	52-55
9	N/A	Screw & Washier	56-59



Test Report

Number: SZHH0059955103

Applicant: LITTELFUSE, INC
8755 WEST HIGGINS ROAD SUITE
500CHICAGO IL 60631 USA

Date: Jun 17, 2011

Attn: KRISTEEN BACILA/ARSENIO CESISTA JR.

Sample Description:

One (1) submitted sample said to be **DD Black Disc**.

Tested component: dark grey magnet.



Tests conducted:

As requested by the applicant, refer to attached page(s) for details.

Authorized by:
For Intertek Testing Services
Shenzhen Ltd.



Ben N.L. Lin
General Manager



Test Report

Number: SZHH0059955103

Tests Conducted

RoHS Chemical Test

(A) Test Result Summary:

Testing Item	Result
Cadmium (Cd) Content (mg/kg)	ND(<2)
Lead (Pb) Content (mg/kg)	ND(<2)
Mercury (Hg) Content (mg/kg)	ND(<2)
Chromium (VI)(Cr ⁶⁺) Content (mg/kg)	18
Polybrominated Biphenyls (PBBs)(mg/kg)	
Monobromobiphenyl (MonoBB)	ND(<5)
Dibromobiphenyl (DiBB)	ND(<5)
Tribromobiphenyl (TriBB)	ND(<5)
Tetrabromobiphenyl (TetraBB)	ND(<5)
Pentabromobiphenyl (PentaBB)	ND(<5)
Hexabromobiphenyl (HexaBB)	ND(<5)
Heptabromobiphenyl (HeptaBB)	ND(<5)
Octabromobiphenyl (OctaBB)	ND(<5)
Nonabromobiphenyl (NonaBB)	ND(<5)
Decabromobiphenyl (DecaBB)	ND(<5)
Polybrominated Diphenyl Ethers (PBDEs)(mg/kg)	
Monobromodiphenyl Ether (MonoBDE)	ND(<5)
Dibromodiphenyl Ether (DiBDE)	ND(<5)
Tribromodiphenyl Ether (TriBDE)	ND(<5)
Tetrabromodiphenyl Ether (TetraBDE)	ND(<5)
Pentabromodiphenyl Ether (PentaBDE)	ND(<5)
Hexabromodiphenyl Ether (HexaBDE)	ND(<5)
Heptabromodiphenyl Ether (HeptaBDE)	ND(<5)
Octabromodiphenyl Ether (OctaBDE)	ND(<5)
Nonabromodiphenyl Ether (NonaBDE)	ND(<5)
Decabromodiphenyl Ether (DecaBDE)	ND(<5)

Chemist: Wang Haijun/Tang Wenming

mg/kg = milligram per kilogram = ppm

< = Less than

ND = Not detected



Test Report

Number: SZHH0059955103

Tests Conducted

(B) RoHS Requirement:

Restricted Substances	Limits
Cadmium (Cd)	0.01% (100 ppm)
Lead (Pb)	0.1% (1000 ppm)
Mercury (Hg)	0.1% (1000 ppm)
Chromium (VI) (Cr ⁶⁺)	0.1% (1000 ppm)
Polybrominated Biphenyls (PBBs)	0.1% (1000 ppm)
Polybrominated Diphenyl Ethers (PBDEs)	0.1% (1000 ppm)

The above limits were quoted from 2002/95/EC and amendment 2005/618/EC for homogeneous material.

(C) Test Method:

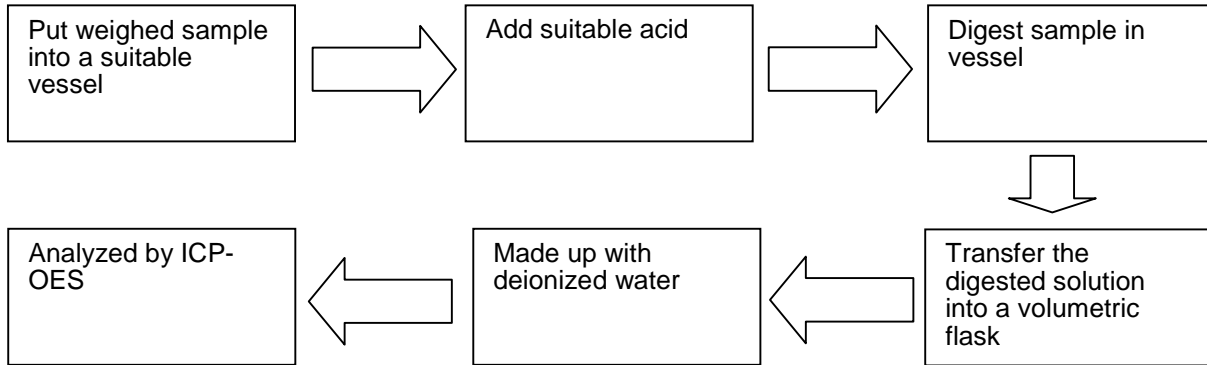
Testing Item	Testing Method	Reporting Limit
Cadmium (Cd) Content	With reference to IEC 62321 Edition 1.0:2008, by acid digestion and determined by ICP - OES	2 mg/kg
Lead (Pb) Content	With reference to IEC 62321 Edition 1.0:2008, by acid digestion and determined by ICP - OES	2 mg/kg
Mercury (Hg) Content	With reference to IEC 62321 Edition 1.0:2008, by acid digestion and determined by ICP - OES	2 mg/kg
Chromium (VI)(Cr ⁶⁺) Content	With reference to IEC 62321 Edition 1.0:2008, by alkaline digestion and determined by UV-VIS Spectrophotometer	1 mg/kg
Polybrominated Biphenyls (PBBs)& Polybrominated Diphenyl Ethers (PBDEs)	With reference to IEC 62321 Edition 1.0:2008, by solvent extraction and determined by GC/MS and further HPLC confirmation when necessary	5 mg/kg

Date sample received: Jun 13, 2011
Testing period: Jun 13, 2011 to Jun 16, 2011

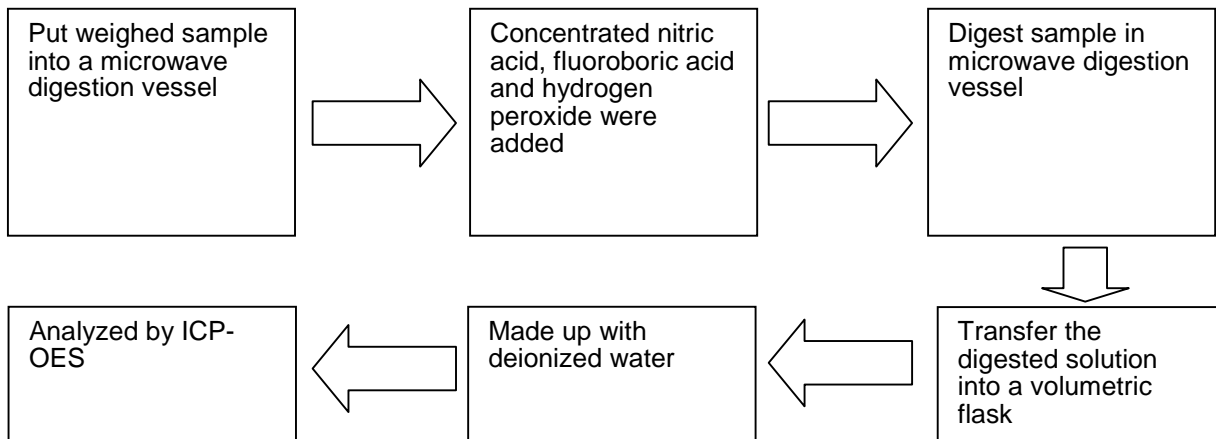
Tests Conducted

(D) Measurement Flowchart:

1. Test for Cd/Pb Contents

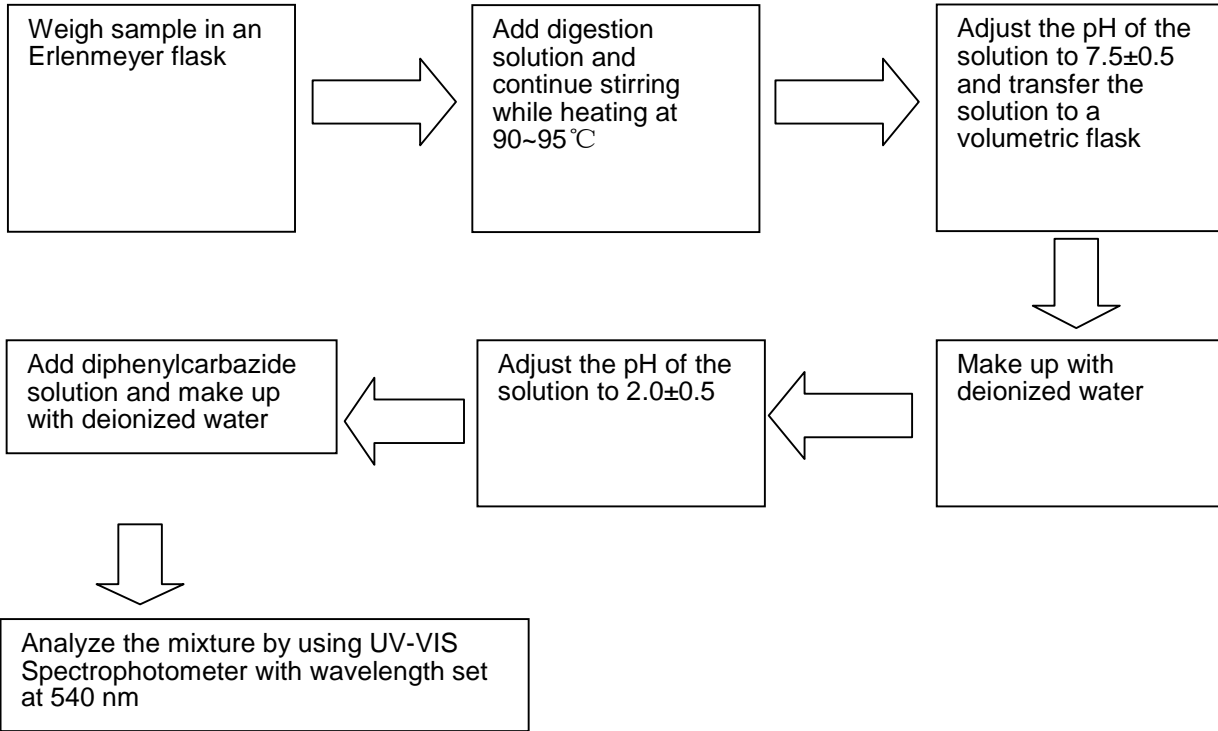


2. Test for Hg Content

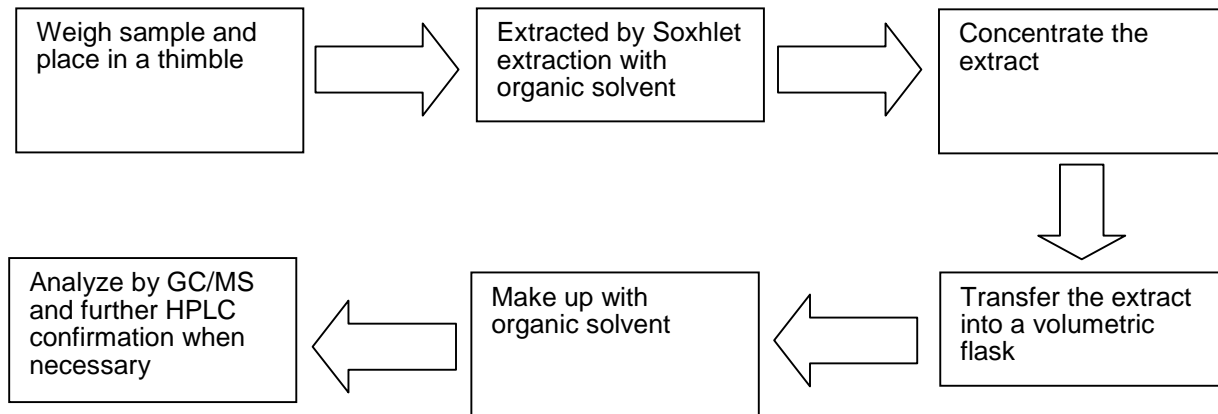


Tests Conducted

3. Test for Chromium (VI) (Cr^{6+}) Content (Alkaline Digestion)



4. Test for PBBs/PBDEs Contents



End of report

測試報告 Test Report

號碼(No.) : CE/2011/21056 日期(Date) : 2011/02/17 頁數(Page) : 1 of 10

新日本化金株式會社
 SHIN-NIHON KAKIN CO., LTD.
 東京都板橋區宮本町33番7號
 33-7, MIYAMOTO-CHO, ITABASHI-KU, TOKYO, JAPAN



以下測試樣品係由客戶送樣，且由客戶聲稱並經客戶確認如下 (The following samples was/were submitted and identified by/on behalf of the client as):

樣品名稱(Sample Description) : 銀膏 (SILVER PASTE)
 樣品型號(Style/Item No.) : SP-A6PL
 材料批號(Lot No.) : 01207
 收件日期(Sample Receiving Date) : 2011/2/10
 測試期間(Testing Period) : 2011/2/10 TO 2011/02/17

測試結果(Test Results) : 請見下一頁 (Please refer to next pages).




Chenyu Kung / Operation Manager
 Signed for and on behalf of
 SGS TAIWAN LTD.
 Chemical Laboratory – Taipei

Unless otherwise stated the results shown in this test report refer only to the sample(s) tested. This test report cannot be reproduced, except in full, without prior written permission of the Company. 除非另有說明，此報告結果僅對測試的樣品負責。本報告未經本公司書面許可，不可部份複製。
 This document is issued by the Company subject to its General Conditions of Service printed overleaf, available on request or accessible at www.sgs.com/terms_and_conditions.htm and for electronic format documents, subject to Terms and Conditions for Electronic Documents at www.sgs.com/terms_e-document.htm. Attention is drawn to the limitation of liability, indemnification and jurisdiction issues defined therein. Any holder of this document is advised that information contained hereon reflects the Company's findings at the time of its intervention only and within the limits of Client's instructions, if any. The Company's sole responsibility is to its Client and this document does not exonerate parties to a transaction from exercising all their rights and obligations under the transaction documents. This document cannot be reproduced except in full, without prior written approval of the Company. Any unauthorized alteration, forgery or falsification of the content or appearance of this document is unlawful and offenders may be prosecuted to the fullest extent of the law.

測試報告 Test Report

號碼(No.) : CE/2011/21056 日期(Date) : 2011/02/17 頁數(Page) : 2 of 10

新日本化金株式會社

SHIN-NIHON KAKIN CO., LTD.

東京都板橋區宮本町33番7號

33-7, MIYAMOTO-CHO, ITABASHI-KU, TOKYO, JAPAN



測試結果(Test Results)

測試部位(PART NAME)No.1 : 墨綠色膏狀 (BLACKISH GREEN PASTE)

測試項目 (Test Items)	單位 (Unit)	測試方法 (Method)	方法偵測 極限值 (MDL)	結果 (Result)
				No.1
鎘 / Cadmium (Cd)	mg/kg	參考IEC 62321: 2008方法, 以感應耦合電漿原子發射光譜儀檢測. / With reference to IEC 62321: 2008 and performed by ICP-AES.	2	n.d.
鉛 / Lead (Pb)	mg/kg	參考IEC 62321: 2008方法, 以感應耦合電漿原子發射光譜儀檢測. / With reference to IEC 62321: 2008 and performed by ICP-AES.	2	n.d.
汞 / Mercury (Hg)	mg/kg	參考IEC 62321: 2008方法, 以感應耦合電漿原子發射光譜儀檢測. / With reference to IEC 62321: 2008 and performed by ICP-AES.	2	n.d.
六價鉻 / Hexavalent Chromium Cr(VI) by alkaline extraction	mg/kg	參考IEC 62321: 2008方法, 以UV-VIS檢測. / With reference to IEC 62321: 2008 and performed by UV-VIS.	2	n.d.
六溴環十二烷 / Hexabromocyclododecane (HBCDD) (CAS No.: 025637-99-4)	mg/kg	參考US EPA 3540C方法, 以氣相層析/質譜儀檢測. / With reference to US EPA 3540C method. Analysis was performed by GC/MS.	5	n.d.

Unless otherwise stated the results shown in this test report refer only to the sample(s) tested. This test report cannot be reproduced, except in full, without prior written permission of the Company. 除非另有說明, 此報告結果僅對測試的樣品負責。本報告未經本公司書面許可, 不可部份複製。

This document is issued by the Company subject to its General Conditions of Service printed overleaf, available on request or accessible at www.sgs.com/terms_and_conditions.htm and for electronic format documents, subject to Terms and Conditions for Electronic Documents at www.sgs.com/terms_e-document.htm. Attention is drawn to the limitation of liability, indemnification and jurisdiction issues defined therein. Any holder of this document is advised that information contained hereon reflects the Company's findings at the time of its intervention only and within the limits of Client's instructions, if any. The Company's sole responsibility is to its Client and this document does not exonerate parties to a transaction from exercising all their rights and obligations under the transaction documents. This document cannot be reproduced except in full, without prior written approval of the Company. Any unauthorized alteration, forgery or falsification of the content or appearance of this document is unlawful and offenders may be prosecuted to the fullest extent of the law.

SGS Taiwan Ltd.
台灣檢驗科技股份有限公司 Chemical-Taipei 33 WuChyuan Road, Wuku Industrial Zone, New Taipei City, Taiwan / 新北市五股工業區五權路33號 + 886 (02)2299 3279 f+ 886 (02)2299 3237 www.sgs.com

測試報告 Test Report

號碼(No.) : CE/2011/21056 日期(Date) : 2011/02/17 頁數(Page) : 3 of 10

新日本化金株式會社

SHIN-NIHON KAKIN CO., LTD.

東京都板橋區宮本町33番7號

33-7, MIYAMOTO-CHO, ITABASHI-KU, TOKYO, JAPAN



測試項目 (Test Items)	單位 (Unit)	測試方法 (Method)	方法偵測 極限值 (MDL)	結果 (Result)
				No.1
鄰苯二甲酸甲苄基丁酯 / BBP (Benzyl butyl phthalate) (CAS No.: 000085-68-7)	%	參考EN 14372, 以氣相層析儀/質譜儀檢 測之。 / With reference to EN 14372. Analysis was performed by GC/MS.	0.003	n.d.
鄰苯二甲酸二丁酯 / DBP (Dibutyl phthalate) (CAS No.: 000084-74-2)	%	參考EN 14372, 以氣相層析儀/質譜儀檢 測之。 / With reference to EN 14372. Analysis was performed by GC/MS.	0.003	0.034
鄰苯二甲酸二(2-乙基己基)酯 / DEHP (Di-(2-ethylhexyl) phthalate) (CAS No.: 000117-81-7)	%	參考EN 14372, 以氣相層析儀/質譜儀檢 測之。 / With reference to EN 14372. Analysis was performed by GC/MS.	0.003	n.d.
四溴雙酚-A / Tetrabromobisphenol A (TBBP-A) (CAS No.: 000079-94-7)	mg/kg	參考DIN 53313方法, 以氣相層析儀/質譜儀 檢測。 / With reference to DIN 53313 method. Analysis was performed by	10	n.d.
鹵素 / Halogen				
鹵素(氟) / Halogen-Fluorine (F) (CAS No.: 014762-94-8)	mg/kg	參考BS EN 14582:2007, 以離子層析儀分 析。 / With reference to BS EN 14582:2007. Analysis was performed by IC.	50	n.d.
鹵素(氯) / Halogen-Chlorine (Cl) (CAS No.: 022537-15-1)			50	n.d.
鹵素(溴) / Halogen-Bromine (Br) (CAS No.: 010097-32-2)			50	n.d.
鹵素(碘) / Halogen-Iodine (I) (CAS No.: 014362-44-8)			50	n.d.

Unless otherwise stated the results shown in this test report refer only to the sample(s) tested. This test report cannot be reproduced, except in full, without prior written permission of the Company. 除非另有說明, 此報告結果僅對測試的樣品負責。本報告未經本公司書面許可, 不可部份複製。

This document is issued by the Company subject to its General Conditions of Service printed overleaf, available on request or accessible at www.sgs.com/terms_and_conditions.htm and for electronic format documents, subject to Terms and Conditions for Electronic Documents at www.sgs.com/terms_e-document.htm. Attention is drawn to the limitation of liability, indemnification and jurisdiction issues defined therein. Any holder of this document is advised that information contained hereon reflects the Company's findings at the time of its intervention only and within the limits of Client's instructions, if any. The Company's sole responsibility is to its Client and this document does not exonerate parties to a transaction from exercising all their rights and obligations under the transaction documents. This document cannot be reproduced except in full, without prior written approval of the Company. Any unauthorized alteration, forgery or falsification of the content or appearance of this document is unlawful and offenders may be prosecuted to the fullest extent of the law.

SGS Taiwan Ltd.
台灣檢驗科技股份有限公司 Chemical-Taipei 33 WuChyuan Road, Wuku Industrial Zone, New Taipei City, Taiwan / 新北市五股工業區五權路33號 +886 (02)2299 3279 f+ 886 (02)2299 3237 www.sgs.com

測試報告 Test Report

號碼(No.) : CE/2011/21056 日期(Date) : 2011/02/17 頁數(Page) : 4 of 10

新日本化金株式會社

SHIN-NIHON KAKIN CO., LTD.

東京都板橋區宮本町33番7號

33-7, MIYAMOTO-CHO, ITABASHI-KU, TOKYO, JAPAN



測試項目 (Test Items)	單位 (Unit)	測試方法 (Method)	方法偵測 極限值 (MDL)	結果 (Result)
				No.1
多溴聯苯總和 / Sum of PBBs	mg/kg	參考IEC 62321: 2008方法, 以氣相層析儀/ 質譜儀檢測. / With reference to IEC 62321: 2008 and performed by GC/MS.	-	n.d.
一溴聯苯 / Monobromobiphenyl			5	n.d.
二溴聯苯 / Dibromobiphenyl			5	n.d.
三溴聯苯 / Tribromobiphenyl			5	n.d.
四溴聯苯 / Tetrabromobiphenyl			5	n.d.
五溴聯苯 / Pentabromobiphenyl			5	n.d.
六溴聯苯 / Hexabromobiphenyl			5	n.d.
七溴聯苯 / Heptabromobiphenyl			5	n.d.
八溴聯苯 / Octabromobiphenyl			5	n.d.
九溴聯苯 / Nonabromobiphenyl			5	n.d.
十溴聯苯 / Decabromobiphenyl			5	n.d.
多溴聯苯醚總和 / Sum of PBDEs			-	n.d.
一溴聯苯醚 / Monobromodiphenyl ether			5	n.d.
二溴聯苯醚 / Dibromodiphenyl ether			5	n.d.
三溴聯苯醚 / Tribromodiphenyl ether			5	n.d.
四溴聯苯醚 / Tetrabromodiphenyl ether			5	n.d.
五溴聯苯醚 / Pentabromodiphenyl ether			5	n.d.
六溴聯苯醚 / Hexabromodiphenyl ether			5	n.d.
七溴聯苯醚 / Heptabromodiphenyl ether			5	n.d.
八溴聯苯醚 / Octabromodiphenyl ether			5	n.d.
九溴聯苯醚 / Nonabromodiphenyl ether	5	n.d.		
十溴聯苯醚 / Decabromodiphenyl ether	5	n.d.		

備註(Note) :

1. mg/kg = ppm ; 0.1wt% = 1000ppm
2. n.d. = Not Detected (未檢出)
3. MDL = Method Detection Limit (方法偵測極限值)
4. "-" = Not Regulated (無規格值)

Unless otherwise stated the results shown in this test report refer only to the sample(s) tested. This test report cannot be reproduced, except in full, without prior written permission of the Company. 除非另有說明, 此報告結果僅對測試的樣品負責。本報告未經本公司書面許可, 不可部份複製。

This document is issued by the Company subject to its General Conditions of Service printed overleaf, available on request or accessible at www.sgs.com/terms_and_conditions.htm and, for electronic format documents, subject to Terms and Conditions for Electronic Documents at www.sgs.com/terms_e-document.htm. Attention is drawn to the limitation of liability, indemnification and jurisdiction issues defined therein. Any holder of this document is advised that information contained hereon reflects the Company's findings at the time of its intervention only and within the limits of Client's instructions, if any. The Company's sole responsibility is to its Client and this document does not exonerate parties to a transaction from exercising all their rights and obligations under the transaction documents. This document cannot be reproduced except in full, without prior written approval of the Company. Any unauthorized alteration, forgery or falsification of the content or appearance of this document is unlawful and offenders may be prosecuted to the fullest extent of the law.

SGS Taiwan Ltd.
台灣檢驗科技股份有限公司 Chemical-Taipei 33 WuChyuan Road, Wuku Industrial Zone, New Taipei City, Taiwan / 新北市五股工業區五權路33號 + 886 (02)2299 3279 F+ 886 (02)2299 3237 www.sgs.com

測試報告 Test Report

號碼(No.) : CE/2011/21056 日期(Date) : 2011/02/17 頁數(Page) : 5 of 10

新日本化金株式會社

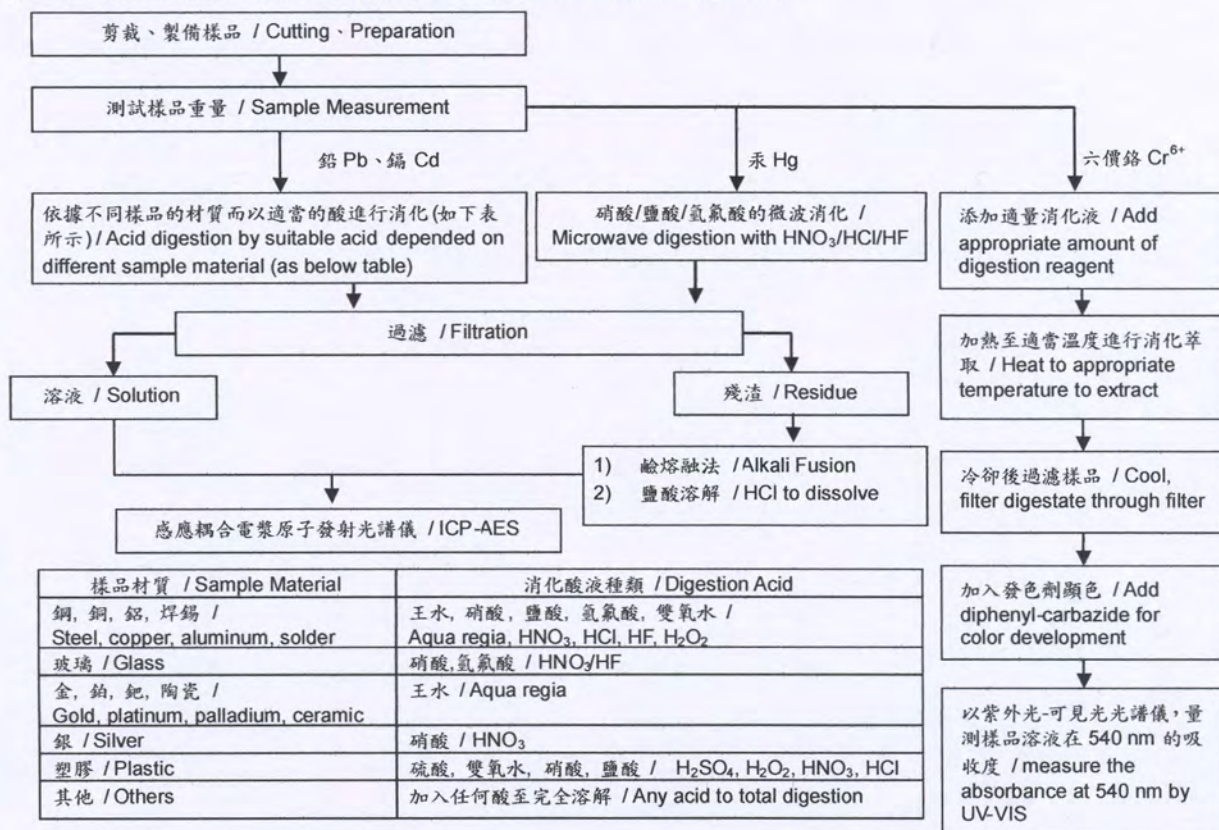
SHIN-NIHON KAKIN CO., LTD.

東京都板橋區宮本町33番7號

33-7, MIYAMOTO-CHO, ITABASHI-KU, TOKYO, JAPAN



- 1) 根據以下的流程圖之條件，樣品已完全溶解。(六價鉻測試方法除外) / These samples were dissolved totally by pre-conditioning method according to below flow chart. (Cr⁶⁺ test method excluded)
- 2) 測試人員：楊登偉 / Name of the person who made measurement: Climbgreat Yang
- 3) 測試負責人：張啓興 / Name of the person in charge of measurement: Troy Chang



Unless otherwise stated the results shown in this test report refer only to the sample(s) tested. This test report cannot be reproduced, except in full, without prior written permission of the Company. 除非另有說明，此報告結果僅對測試的樣品負責。本報告未經本公司書面許可，不可部份複製。
This document is issued by the Company subject to its General Conditions of Service printed overleaf, available on request or accessible at www.sgs.com/terms_and_conditions.htm and for electronic format documents, subject to Terms and Conditions for Electronic Documents at www.sgs.com/terms_e-document.htm. Attention is drawn to the limitation of liability, indemnification and jurisdiction issues defined therein. Any holder of this document is advised that information contained hereon reflects the Company's findings at the time of its intervention only and within the limits of Client's instructions, if any. The Company's sole responsibility is to its Client and this document does not exonerate parties to a transaction from exercising all their rights and obligations under the transaction documents. This document cannot be reproduced except in full, without prior written approval of the Company. Any unauthorized alteration, forgery or falsification of the content or appearance of this document is unlawful and offenders may be prosecuted to the fullest extent of the law.

SGS Taiwan Ltd. 台灣檢驗科技股份有限公司 Chemical-Taipei 33 WuChyuan Road, Wuku Industrial Zone, New Taipei City, Taiwan / 新北市五股工業區五權路88號 + 886 (02)2299 3279 f + 886 (02)2299 3237 www.sgs.com

測試報告 Test Report

號碼(No.) : CE/2011/21056 日期(Date) : 2011/02/17 頁數(Page) : 6 of 10

新日本化金株式會社

SHIN-NIHON KAKIN CO., LTD.

東京都板橋區宮本町33番7號

33-7, MIYAMOTO-CHO, ITABASHI-KU, TOKYO, JAPAN

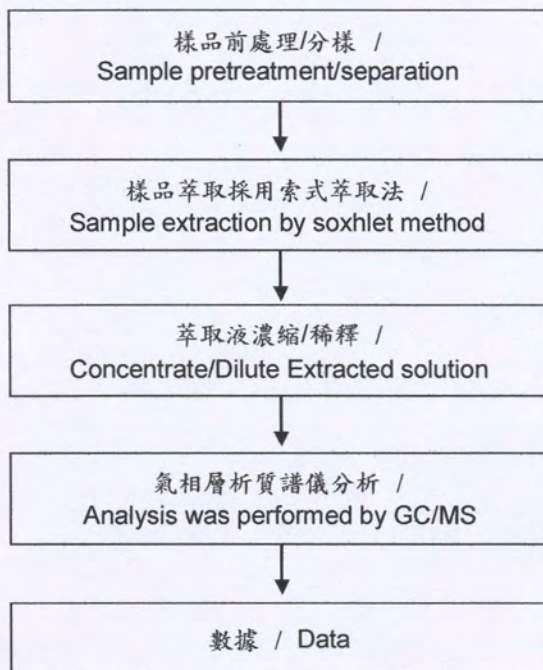


索式萃取(GC/MS)分析流程圖 /

Analytical flow chart of Soxhlet extraction (GC/MS) procedure

- 1) 測試人員：傅莉雅 / Name of the person who made measurement: Lydia Fu
- 2) 測試負責人：陳新智 / Name of the person in charge of measurement: Shinjyh Chen

■ 測試項目(Test Items): 可塑劑、苯並三唑類化合物、六溴環十二烷、壬酚、單甲基二
 溴二苯基甲烷、有機磷化合物 / Phthalate、Benzotriazole、HBCDD、NP、DBBT、
 Organic phosphorus compounds



Unless otherwise stated the results shown in this test report refer only to the sample(s) tested. This test report cannot be reproduced, except in full, without prior written permission of the Company. 除非另有說明，此報告結果僅對測試的樣品負責。本報告未經本公司書面許可，不可部份複製。
 This document is issued by the Company subject to its General Conditions of Service printed overleaf, available on request or accessible at www.sgs.com/terms_and_conditions.htm and for electronic format documents, subject to Terms and Conditions for Electronic Documents at www.sgs.com/terms_e-document.htm. Attention is drawn to the limitation of liability, indemnification and jurisdiction issues defined therein. Any holder of this document is advised that information contained hereon reflects the Company's findings at the time of its intervention only and within the limits of Client's instructions, if any. The Company's sole responsibility is to its Client and this document does not exonerate parties to a transaction from exercising all their rights and obligations under the transaction documents. This document cannot be reproduced except in full, without prior written approval of the Company. Any unauthorized alteration, forgery or falsification of the content or appearance of this document is unlawful and offenders may be prosecuted to the fullest extent of the law.

測試報告 Test Report

號碼(No.) : CE/2011/21056 日期(Date) : 2011/02/17 頁數(Page) : 7 of 10

新日本化金株式會社

SHIN-NIHON KAKIN CO., LTD.

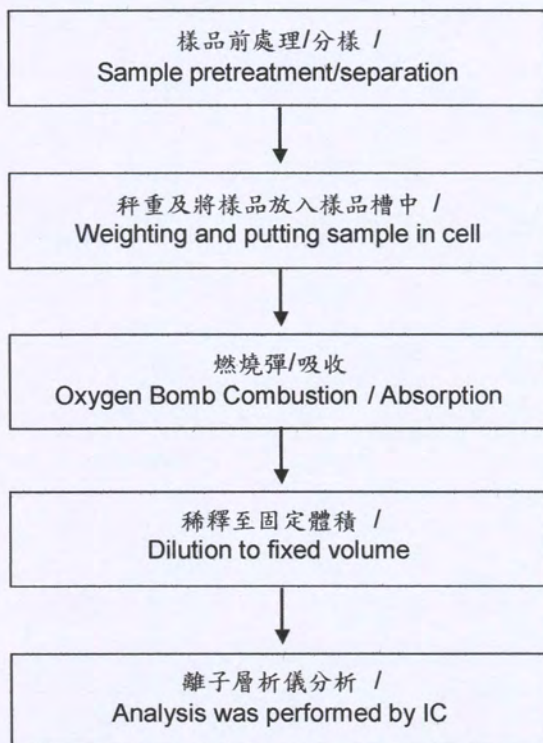
東京都板橋區宮本町33番7號

33-7, MIYAMOTO-CHO, ITABASHI-KU, TOKYO, JAPAN



鹵素分析流程圖 / Analytical flow chart of halogen content

- 1) 測試人員：陳恩臻 / Name of the person who made measurement: Rita Chen
- 2) 測試負責人：張啓興 / Name of the person in charge of measurement: Troy Chang



Unless otherwise stated the results shown in this test report refer only to the sample(s) tested. This test report cannot be reproduced, except in full, without prior written permission of the Company. 除非另有說明，此報告結果僅對測試的樣品負責。本報告未經本公司書面許可，不可部份複製。
This document is issued by the Company subject to its General Conditions of Service printed overleaf, available on request or accessible at www.sgs.com/terms_and_conditions.htm and for electronic format documents, subject to Terms and Conditions for Electronic Documents at www.sgs.com/terms_e-document.htm. Attention is drawn to the limitation of liability, indemnification and jurisdiction issues defined therein. Any holder of this document is advised that information contained hereon reflects the Company's findings at the time of its intervention only and within the limits of Client's instructions, if any. The Company's sole responsibility is to its Client and this document does not exonerate parties to a transaction from exercising all their rights and obligations under the transaction documents. This document cannot be reproduced except in full, without prior written approval of the Company. Any unauthorized alteration, forgery or falsification of the content or appearance of this document is unlawful and offenders may be prosecuted to the fullest extent of the law.

SGS Taiwan Ltd. 台灣檢驗科技股份有限公司 Chemical-Taipei 33 WuChyuan Road, Wuku Industrial Zone, New Taipei City, Taiwan / 新北市五股工業區五權路33號 + 886 (02)2299 3279 f + 886 (02)2299 3237 www.sgs.com

測試報告 Test Report

號碼(No.) : CE/2011/21056 日期(Date) : 2011/02/17 頁數(Page) : 8 of 10

新日本化金株式會社

SHIN-NIHON KAKIN CO., LTD.

東京都板橋區宮本町33番7號

33-7, MIYAMOTO-CHO, ITABASHI-KU, TOKYO, JAPAN



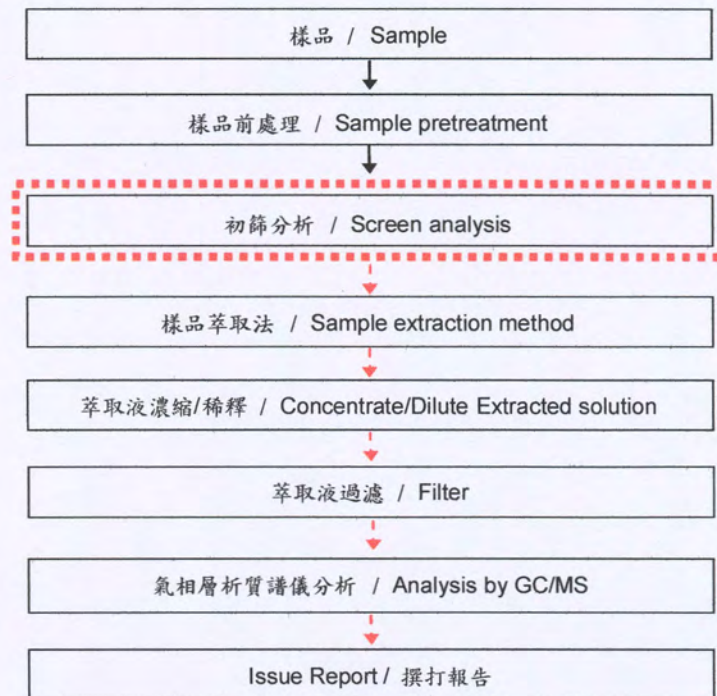
分析流程圖 / Analytical flow chart

1) 測試人員：翁賜彬 / Name of the person who made measurement: Roman Wong

2) 測試負責人：張啓興 / Name of the person in charge of measurement: Troy Chang

■ 測試項目 (Test Items): 多溴聯苯/多溴聯苯醚, 四溴雙酚-A-雙 / PBB/PBDE, TBBP-A-bis

初次測試程序 / First testing process —> 選擇性篩檢程序 / Optional screen process 確認程序 / Confirmation process - - ->



Unless otherwise stated the results shown in this test report refer only to the sample(s) tested. This test report cannot be reproduced, except in full, without prior written permission of the Company. 除非另有說明，此報告結果僅對測試的樣品負責。本報告未經本公司書面許可，不可部份複製。

This document is issued by the Company subject to its General Conditions of Service printed overleaf, available on request or accessible at www.sgs.com/terms_and_conditions.htm and for electronic format documents, subject to Terms and Conditions for Electronic Documents at www.sgs.com/terms_e-document.htm. Attention is drawn to the limitation of liability, indemnification and jurisdiction issues defined therein. Any holder of this document is advised that information contained hereon reflects the Company's findings at the time of its intervention only and within the limits of Client's instructions, if any. The Company's sole responsibility is to its Client and this document does not exonerate parties to a transaction from exercising all their rights and obligations under the transaction documents. This document cannot be reproduced except in full, without prior written approval of the Company. Any unauthorized alteration, forgery or falsification of the content or appearance of this document is unlawful and offenders may be prosecuted to the fullest extent of the law.

SGS Taiwan Ltd. 台灣檢驗科技股份有限公司 Chemical-Taipei 33 WuChyuan Road, Wuku Industrial Zone, New Taipei City, Taiwan / 新北市五股工業區五權路33號 + 886 (02)2299 3279 f + 886 (02)2299 3237 www.sgs.com

測試報告 Test Report

號碼(No.) : CE/2011/21056 日期(Date) : 2011/02/17 頁數(Page) : 9 of 10

新日本化金株式會社

SHIN-NIHON KAKIN CO., LTD.

東京都板橋區宮本町33番7號

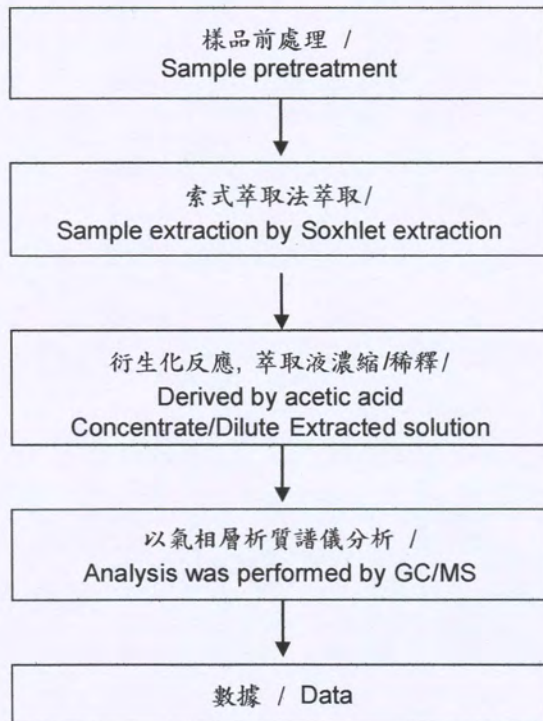
33-7, MIYAMOTO-CHO, ITABASHI-KU, TOKYO, JAPAN



分析流程圖 / Analytical flow chart

- 1) 測試人員：傅莉雅 / Name of the person who made measurement: Lydia Fu
- 2) 測試負責人：陳新智 / Name of the person in charge of measurement: Shinjyh Chen

■ 測試項目(Test Items): 四溴雙酚-A、雙酚 A / TBBP-A、Bisphenol A



Unless otherwise stated the results shown in this test report refer only to the sample(s) tested. This test report cannot be reproduced, except in full, without prior written permission of the Company. 除非另有說明，此報告結果僅對測試的樣品負責。本報告未經本公司書面許可，不可部份複製。

This document is issued by the Company subject to its General Conditions of Service printed overleaf, available on request or accessible at www.sgs.com/terms_and_conditions.htm and for electronic format documents, subject to Terms and Conditions for Electronic Documents at www.sgs.com/terms_e-document.htm. Attention is drawn to the limitation of liability, indemnification and jurisdiction issues defined therein. Any holder of this document is advised that information contained hereon reflects the Company's findings at the time of its intervention only and within the limits of Client's instructions, if any. The Company's sole responsibility is to its Client and this document does not exonerate parties to a transaction from exercising all their rights and obligations under the transaction documents. This document cannot be reproduced except in full, without prior written approval of the Company. Any unauthorized alteration, forgery or falsification of the content or appearance of this document is unlawful and offenders may be prosecuted to the fullest extent of the law.

SGS Taiwan Ltd.
台灣檢驗科技股份有限公司 | Chemical-Taipei 33 WuChyuan Road, Wuku Industrial Zone, New Taipei City, Taiwan / 新北市五股工業區五權路33號 + 886 (02)2299 3279 f + 886 (02)2299 3237 www.sgs.com

測試報告 Test Report

號碼(No.) : CE/2011/21056 日期(Date) : 2011/02/17 頁數(Page) : 10 of 10

新日本化金株式會社

SHIN-NIHON KAKIN CO., LTD.

東京都板橋區宮本町33番7號

33-7, MIYAMOTO-CHO, ITABASHI-KU, TOKYO, JAPAN



CE/2011/21056



** 報告結尾 (End of Report) **

Unless otherwise stated the results shown in this test report refer only to the sample(s) tested. This test report cannot be reproduced, except in full, without prior written permission of the Company. 除非另有說明，此報告結果僅對測試的樣品負責。本報告未經本公司書面許可，不可部份複製。

This document is issued by the Company subject to its General Conditions of Service printed overleaf, available on request or accessible at www.sgs.com/terms_and_conditions.htm and for electronic format documents, subject to Terms and Conditions for Electronic Documents at www.sgs.com/terms_e-document.htm. Attention is drawn to the limitation of liability, indemnification and jurisdiction issues defined therein. Any holder of this document is advised that information contained hereon reflects the Company's findings at the time of its intervention only and within the limits of Client's instructions, if any. The Company's sole responsibility is to its Client and this document does not exonerate parties to a transaction from exercising all their rights and obligations under the transaction documents. This document cannot be reproduced except in full, without prior written approval of the Company. Any unauthorized alteration, forgery or falsification of the content or appearance of this document is unlawful and offenders may be prosecuted to the fullest extent of the law.

SGS Taiwan Ltd.

台灣檢驗科技股份有限公司 Chemical-Taipei 33 WuChyuan Road, Wuku Industrial Zone, New Taipei City, Taiwan / 新北市五股工業區五權路33號 + 886 (02)2299 3279 f + 886 (02)2299 3237 www.sgs.com

Test Report

No. CANML1100751101

Date: 10 Mar 2011

Page 1 of 4

DONGGUAN QI HANG XI YE MANUFACTURING CO.,LTD
 NO.1 INDUSTRIAL PARK,XIAGANG,CHANGAN TOWN,DONGGUAN CITY
 CHINA

This report is to supersede test report CANML1100595601.

The following sample(s) was/were submitted and identified on behalf of the clients as :

LEAD-FREE SOLDER PASTE

SGS Job No. : 13005585 - GZ
 SGS Internal Reference No. : GC110301059-8.1
 Client Ref. Information : MIXTURE OF QH#LF96, QH#LF97, QH#LF98, QH#LF658, QH#LF601, QH#LT658, QH#LT601, QH#LT658C, QH#LF96H, QH#LF97H, QH#LF98H, QH#LF658H, QH#LF601H, QH#LT658H, QH#LT601H, QH#LT658CH
 Date of Sample Received : 02 Mar 2011
 Testing Period : 02 Mar 2011 - 07 Mar 2011
 Test Requested : Selected test(s) as requested by client.
 Test Method : Please refer to next page(s).
 Test Results : Please refer to next page(s).
 Conclusion : Based on the performed tests on submitted sample(s), the results **comply with the RoHS Directive 2002/95/EC and its subsequent amendments.**

Signed for and on behalf of
 SGS-CSTC Ltd.

Alpher Qiu
 Approved Signatory

This document is issued by the Company subject to its General Conditions of Sale and/or other specific conditions of sale which may apply. The Company's liability is limited to the extent of the information provided in this document. The Company is not responsible for any damage or loss of any kind caused by the use of this document. The Company is not responsible for any damage or loss of any kind caused by the use of this document. The Company is not responsible for any damage or loss of any kind caused by the use of this document. The Company is not responsible for any damage or loss of any kind caused by the use of this document.



Test Report

No. CANML1100751101

Date: 10 Mar 2011

Page 2 of 4

Test Results:

ID for specimen 1 : CAN11-007511.001
 Description for specimen 1 : Grey paste

RoHS Directive 2002/95/EC

Test Item(s)	Unit	Test Method (Reference)	Result	MDL	Limit
Cadmium (Cd)	mg/kg	IEC 62321:2008, ICP-OES	N.D.	2	100
Lead (Pb)	mg/kg	IEC 62321:2008, ICP-OES	250	2	1000
Mercury (Hg)	mg/kg	IEC 62321:2008, ICP-OES	N.D.	2	1000
Hexavalent Chromium (CrVI) by alkaline extraction	mg/kg	IEC 62321:2008, UV-Vis	N.D.	2	1000
Sum of PBBs	mg/kg	-	N.D.	-	1000
Monobromobiphenyl	mg/kg	IEC 62321:2008, GC-MS	N.D.	5	
Dibromobiphenyl	mg/kg	IEC 62321:2008, GC-MS	N.D.	5	
Tribromobiphenyl	mg/kg	IEC 62321:2008, GC-MS	N.D.	5	
Tetrabromobiphenyl	mg/kg	IEC 62321:2008, GC-MS	N.D.	5	
Pentabromobiphenyl	mg/kg	IEC 62321:2008, GC-MS	N.D.	5	
Hexabromobiphenyl	mg/kg	IEC 62321:2008, GC-MS	N.D.	5	
Heptabromobiphenyl	mg/kg	IEC 62321:2008, GC-MS	N.D.	5	
Octabromobiphenyl	mg/kg	IEC 62321:2008, GC-MS	N.D.	5	
Nonabromobiphenyl	mg/kg	IEC 62321:2008, GC-MS	N.D.	5	
Decabromobiphenyl	mg/kg	IEC 62321:2008, GC-MS	N.D.	5	
Sum of PBDEs	mg/kg	-	N.D.	-	1000
Monobromodiphenyl ether	mg/kg	IEC 62321:2008, GC-MS	N.D.	5	
Dibromodiphenyl ether	mg/kg	IEC 62321:2008, GC-MS	N.D.	5	
Tribromodiphenyl ether	mg/kg	IEC 62321:2008, GC-MS	N.D.	5	
Tetrabromodiphenyl ether	mg/kg	IEC 62321:2008, GC-MS	N.D.	5	
Pentabromodiphenyl ether	mg/kg	IEC 62321:2008, GC-MS	N.D.	5	
Hexabromodiphenyl ether	mg/kg	IEC 62321:2008, GC-MS	N.D.	5	
Heptabromodiphenyl ether	mg/kg	IEC 62321:2008, GC-MS	N.D.	5	
Octabromodiphenyl ether	mg/kg	IEC 62321:2008, GC-MS	N.D.	5	
Nonabromodiphenyl ether	mg/kg	IEC 62321:2008, GC-MS	N.D.	5	
Decabromodiphenyl ether	mg/kg	IEC 62321:2008, GC-MS	N.D.	5	

Note:

1. mg/kg = ppm
2. N.D. = Not Detected (< MDL)
3. MDL = Method Detection Limit
4. "-" = Not regulated

Remark: The result(s) shown is/are of the total weight of dried sample.

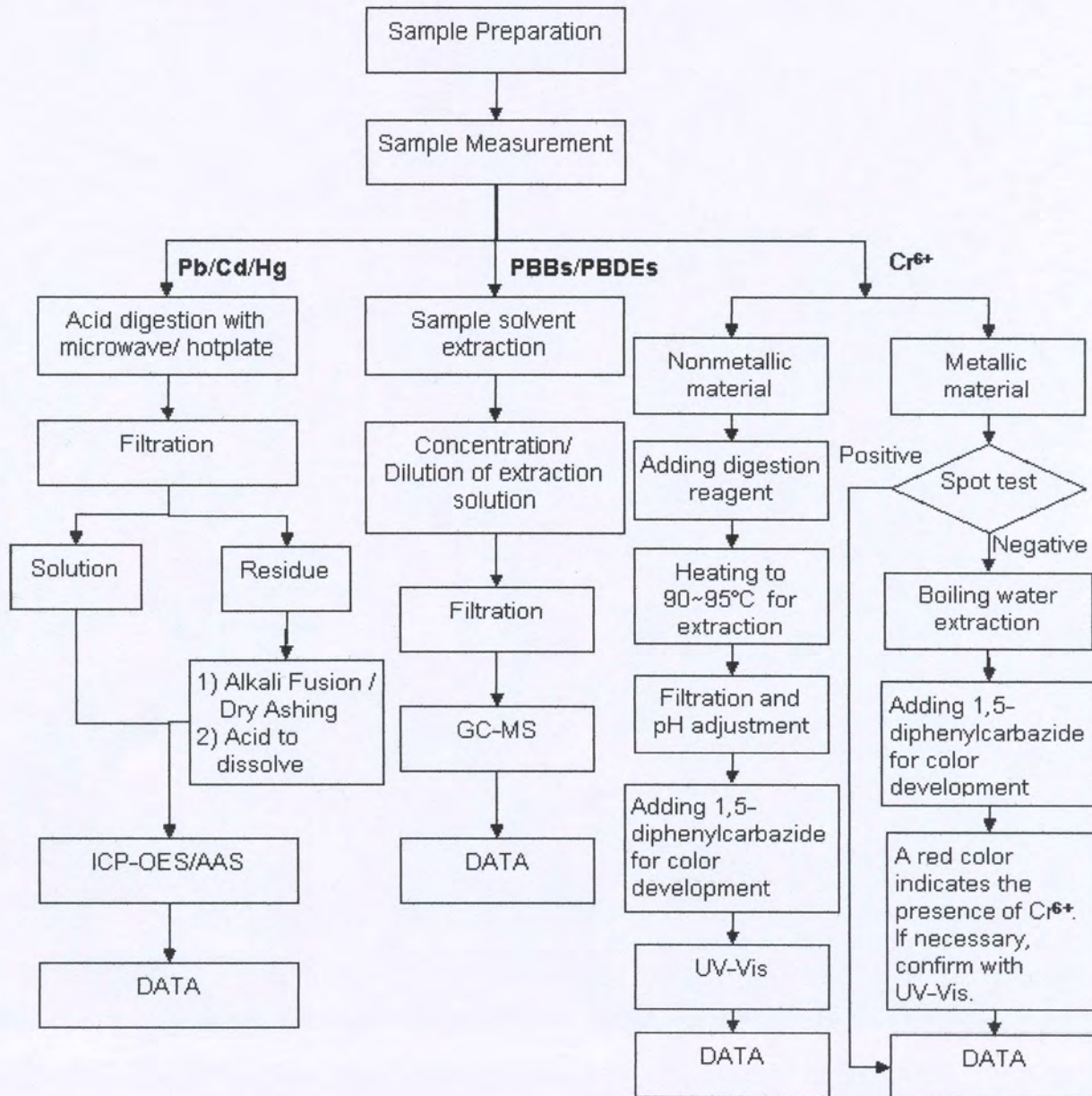
This document is issued by the Company subject to its General Conditions of Service printed overleaf, available on request or accessible at http://www.sgs.com/terms_and_conditions.htm and, for electronic format documents, subject to Terms and Conditions for Electronic Documents at www.sgs.com/terms_e-document.htm. Attention is drawn to the limitation of liability, indemnification and jurisdiction issues defined therein. Any holder of this document is advised that information contained hereon reflects the Company's findings at the time of its preparation only, and within the limits of Client's instructions, if any. The Company's sole responsibility is to its Client and this document does not exonerate parties to a transaction from exercising all their rights and obligations under the transaction documents. This document cannot be reproduced except in full, without prior written approval of the Company. Any unauthorized alteration, forgery or falsification of the content or appearance of this document is unlawful and offenders may be prosecuted to the fullest extent of the law. Unless otherwise stated, the results shown in this test report refer only to the sample(s) tested.



ATTACHMENTS

RoHS Testing Flow Chart

- 1) Name of the person who made testing: Bella Wang / Cutey Yu / Ross Zhan
- 2) Name of the person in charge of testing: Adams Yu / Ryan Yang
- 3) These samples were dissolved totally by pre-conditioning method according to below flow chart (Cr6+ and PBBs/PBDEs test method excluded).



This document is issued by the Company subject to its General Conditions of Service printed overleaf, available on request or accessible at http://www.sgs.com/terms_and_conditions.htm and, for electronic format documents, subject to Terms and Conditions for Electronic Documents at www.sgs.com/terms_e-document.htm. Attention is drawn to the limitation of liability, indemnification and jurisdiction issues defined therein. Any holder of this document is advised that information contained hereon reflects the Company's findings at the time of its preparation only and within the limits of Client's instructions, if any. The Company's sole responsibility is to its Client and this document does not exonerate parties to a transaction from exercising all their rights and obligations under the transaction documents. This document cannot be reproduced except in full, without prior written approval of the Company. Any unauthorized alteration, forgery or falsification of the content or appearance of this document is unlawful and offenders may be prosecuted to the fullest extent of the law. Unless otherwise stated, the results shown in this test report refer only to the sample(s) tested.



Sample photo:



SGS authenticate the photo on original report only

*** End of Report ***

This document is issued by the Company subject to its General Conditions of Service printed overleaf, available on request or accessible at http://www.sgs.com/terms_and_conditions.htm and, for electronic format documents, subject to Terms and Conditions for Electronic Documents at www.sgs.com/terms_e-document.htm. Attention is drawn to the limitation of liability, indemnification and jurisdiction issues defined therein. Any holder of this document is advised that information contained hereon reflects the Company's findings at the time of its preparation only, and within the limits of Client's instructions, if any. The Company's sole responsibility is to its Client and this document does not exonerate parties to a transaction from exercising all their rights and obligations under the transaction documents. This document cannot be reproduced except in full, without prior written approval of the Company. Any unauthorized alteration, forgery or falsification of the content or appearance of this document is unlawful and offenders may be prosecuted to the fullest extent of the law. Unless otherwise stated, the results shown in this test report refer only to the sample(s) tested.



Test Report

No. CANML1100751102

Date: 10 Mar 2011

Page 1 of 4

DONGGUAN QI HANG XI YE MANUFACTURING CO.,LTD
NO.1 INDUSTRIAL PARK,XIAGANG,CHANGAN TOWN,DONGGUAN CITY
CHINA

This report is to supersede test report CANML1100595602.

The following sample(s) was/were submitted and identified on behalf of the clients as :
LEAD-FREE SOLDER PASTE

SGS Job No. : 13005585 - GZ
SGS Internal Reference No. : GC110301059-8.2
Client Ref. Information : MIXTURE OF QH#LF96H, QH#LF97H, QH#LF98H, QH#LF658H,
QH#LF601H, QH#LT658H, QH#LT601H, QH#LT658CH
Date of Sample Received : 02 Mar 2011
Testing Period : 02 Mar 2011 - 07 Mar 2011
Test Requested : Selected test(s) as requested by client.
Test Method : Please refer to next page(s).
Test Results : Please refer to next page(s).

Signed for and on behalf of
SGS-CSTC Ltd.



Alpher Qiu
Approved Signatory

This document is issued by the Company subject to its General Conditions of Sale and unless otherwise stated is or remains the property of the Company and its subsidiaries and for electronic format documents subject to Terms and Conditions for Electronic Documents at www.sgs.com in connection therewith. Assurances are given to the limitation of liability, jurisdiction and arbitration clauses therein. Any holder of this document is advised that information contained herein reflects the Company's findings at the time of its preparation of this report and without limitation of Client's instructions, if any. The Company's sole responsibility is to its Client and the document does not constitute a transaction for or authorize any trade, sale and calculation under the transaction documents. This document cannot be reproduced except in full, without prior written approval of the Company. Any unauthorized alteration, forgery or falsification of the content or appearance of this document is unlawful and offenders may be prosecuted to the fullest extent of the law. Please refer to the results shown in this test report refer only to the samples tested.



Test Report

No. CANML1100751102

Date: 10 Mar 2011

Page 2 of 4

Test Results:

ID for specimen 1 : CAN11-007511.001
 Description for specimen 1 : Grey paste

Halogen

Test Item(s)	Unit	Test Method (Reference)	Result	MDL
Fluorine (F)	mg/kg	BS EN 14582:2007, IC	N.D.	50
Chlorine (Cl)	mg/kg	BS EN 14582:2007, IC	N.D.	50
Bromine (Br)	mg/kg	BS EN 14582:2007, IC	N.D.	50
Iodine (I)	mg/kg	BS EN 14582:2007, IC	N.D.	50

Note:

1. mg/kg = ppm
2. N.D. = Not Detected (< MDL)
3. MDL = Method Detection Limit

Remark1: The result(s) shown is/are of the total weight of wet sample.

Remark2: For Halogen tests, the specimen is/are extracted by organic solvent and subsequently burned in oxygen bomb.

This document is issued by the Company subject to its General Conditions of Services printed overleaf, available on request or accessible at http://www.sgs.com/terms_and_conditions.htm and, for electronic format documents, subject to Terms and Conditions for Electronic Documents at www.sgs.com/terms_e-document.htm. Attention is drawn to the limitation of liability, indemnification and jurisdiction issues defined therein. Any holder of this document is advised that information contained hereon reflects the Company's findings at the time of its intervention only, and within the limits of Client's instructions, if any. The Company's sole responsibility is to its Client and this document does not exonerate parties to a transaction from exercising all their rights and obligations under the transaction documents. This document cannot be reproduced except in full, without prior written approval of the Company. Any unauthorized alteration, forgery or falsification of the content or appearance of this document is unlawful and offenders may be prosecuted to the fullest extent of the law. Unless otherwise stated, the results shown in this test report refer only to the sample(s) tested.



SGS TESTING SERVICES
 Société Générale de Surveillance

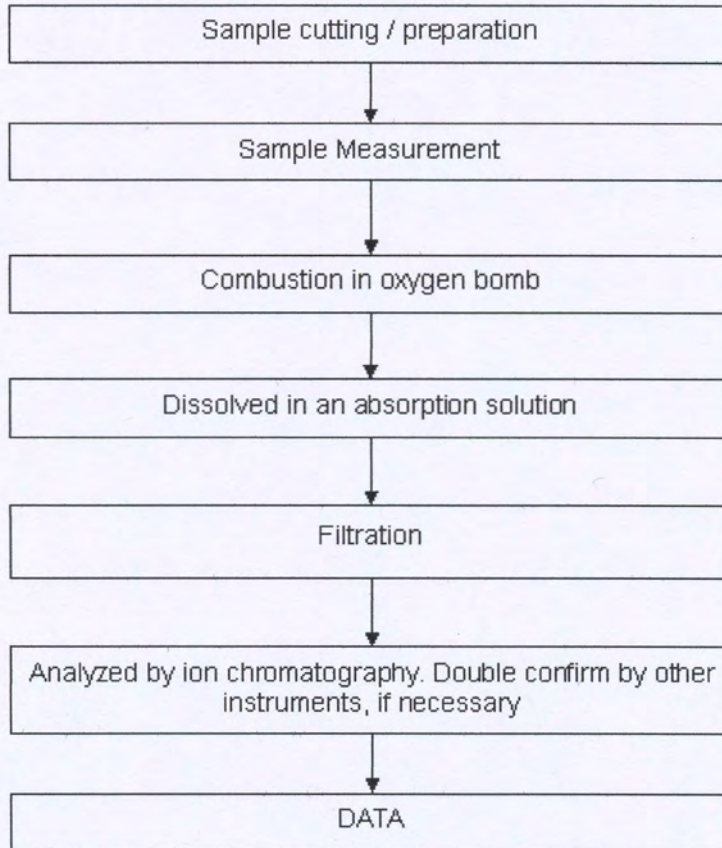
198 Kezhu Road, Sciencetech Park Guangzhou Economic & Technology Development District, Guangzhou, China 510663 t (86-20) 82155555 f (86-20) 82075113 www.cn.sgs.com
 中国·广州·经济技术开发区科学城科珠路198号 邮编: 510663 t (86-20) 82155555 f (86-20) 82075113 e sgs.china@sgs.com

Member of the SGS Group (SGS SA)

ATTACHMENTS

Halogen Testing Flow Chart

- 1) Name of the person who made testing: Liang Wang
- 2) Name of the person in charge of testing: Michelle Song



This document is issued by the Company subject to its General Conditions of Service printed overleaf, available on request or accessible at http://www.sgs.com/terms_and_conditions.htm and for electronic format documents, subject to Terms and Conditions for Electronic Documents at www.sgs.com/terms_e-document.htm. Attention is drawn to the limitation of liability, indemnification and jurisdiction issues defined therein. Any holder of this document is advised that information contained hereon reflects the Company's findings at the time of its preparation only, and within the limits of Client's instructions, if any. The Company's sole responsibility is to its Client and this document does not exonerate parties to a transaction from exercising all their rights and obligations under the transaction documents. This document cannot be reproduced except in full, without prior written approval of the Company. Any unauthorized alteration, forgery or falsification of the content or appearance of this document is unlawful and offenders may be prosecuted to the fullest extent of the law. Unless otherwise stated, the results shown in this test report refer only to the sample(s) tested.



Sample photo:



SGS authenticate the photo on original report only

*** End of Report ***

This document is issued by the Company subject to its General Conditions of Service printed overleaf, available on request or accessible at http://www.sgs.com/terms_and_conditions.htm and, for electronic format documents, subject to Terms and Conditions for Electronic Documents at www.sgs.com/terms_e-document.htm. Attention is drawn to the limitation of liability, indemnification and jurisdiction issues defined therein. Any holder of this document is advised that information contained hereon reflects the Company's findings at the time of its implementation only, and within the limits of Client's instructions, if any. The Company's sole responsibility is to its Client and this document does not exonerate parties to a transaction from exercising all their rights and obligations under the transaction documents. This document cannot be reproduced except in full, without prior written approval of the Company. Any unauthorized alteration, forgery or falsification of the content or appearance of this document is unlawful and offenders may be prosecuted to the fullest extent of the law. Unless otherwise stated, the results shown in this test report refer only to the sample(s) tested.





Test Report

Number: SZHH0061988502

Applicant: LITTELFUSE, INC
8755 WEST HIGGINS ROAD SUITE
500 CHICAGO IL 60631 USA

Date: Aug 17, 2011

Attn: KRISTEEN BACILA/ARSENIO CESISTA JR.

Sample Description:

One (1) submitted sample said to be **silver color metal (terminals)**.



Tests conducted:

As requested by the applicant, refer to attached page(s) for details.

Authorized by:
For Intertek Testing Services
Shenzhen Ltd.



Ben N.L. Lin
General Manager



Test Report

Number: SZHH0061988502

Tests Conducted

RoHS Chemical Test

(A) Test Result Summary:

Testing Item	Result
Cadmium (Cd) Content (mg/kg)	ND(<2)
Lead (Pb) Content (mg/kg)	ND(<2)
Mercury (Hg) Content (mg/kg)	ND(<2)
Chromium (VI)(Cr ⁶⁺) Result (By Boiling Water Extraction on Metal)(mg/kg with 50cm ²)	Negative(<0.02)

Chemist: Wang Haijun

mg/kg = milligram per kilogram = ppm

mg/kg with 50cm² = milligram per kilogram with 50 square centimetre

< = Less than

ND = Not detected

Positive = A positive test result indicated the presence of Cr(VI) at the time of testing, equal to or greater than threshold of 1 mg/kg for spot test procedure or 0.02 mg/kg for boiling-water-extraction procedures with a sample surface area of 50cm² used. However, it shall not be interpreted as the Cr(VI) concentration in the coating layer of the sample and should not be used as a method detection limit for this qualitative test.

Negative = A negative test result indicated above positive observation was not found at the time of testing. When the spot-test showed a negative result, the boiling-water-extraction procedure shall be used to verify the result.

(B) RoHS Requirement:

Restricted Substances	Limits
Cadmium (Cd)	0.01% (100 ppm)
Lead (Pb)	0.1% (1000 ppm)
Mercury (Hg)	0.1% (1000 ppm)
Chromium (VI) (Cr ⁶⁺)	0.1% (1000 ppm)

The above limits were quoted from 2002/95/EC and amendment 2005/618/EC for homogeneous material.

Test Report

Number: SZHH0061988502

Tests Conducted

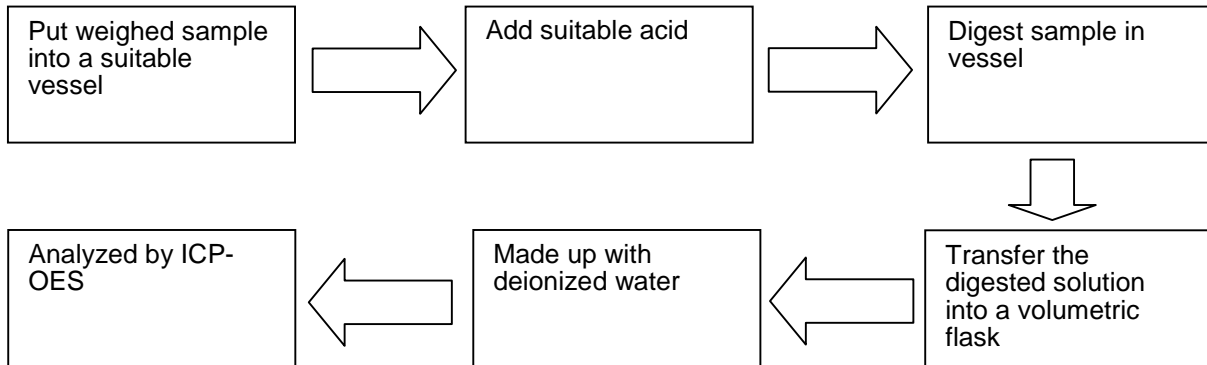
(C) Test Method:

Testing Item	Testing Method	Reporting Limit
Cadmium (Cd) Content	With reference to IEC 62321 Edition 1.0:2008, by acid digestion and determined by ICP - OES	2 mg/kg
Lead (Pb) Content	With reference to IEC 62321 Edition 1.0:2008, by acid digestion and determined by ICP - OES	2 mg/kg
Mercury (Hg) Content	With reference to IEC 62321 Edition 1.0:2008, by acid digestion and determined by ICP - OES	2 mg/kg
Chromium (VI) (Cr ⁶⁺) Content	With reference to IEC 62321 Edition 1.0:2008, by boiling water extraction and determined by UV-VIS Spectrophotometer	Positive/ Negative (Threshold of 0.02mg/kg with 50cm ²)

Date sample received : Aug 12, 2011
 Testing period: Aug 12, 2011 to Aug 15, 2011

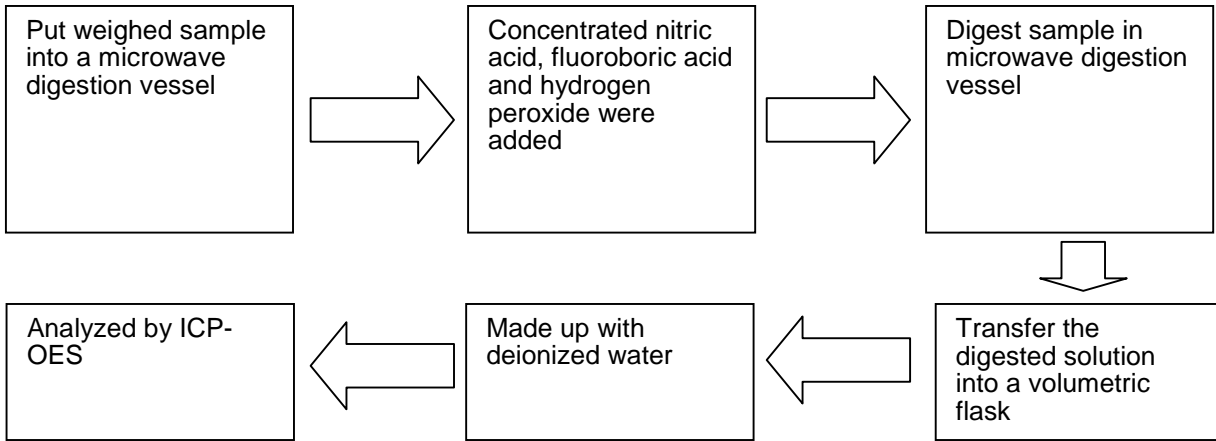
(D) Measurement Flowchart:

1. Test for Cd/Pb Contents

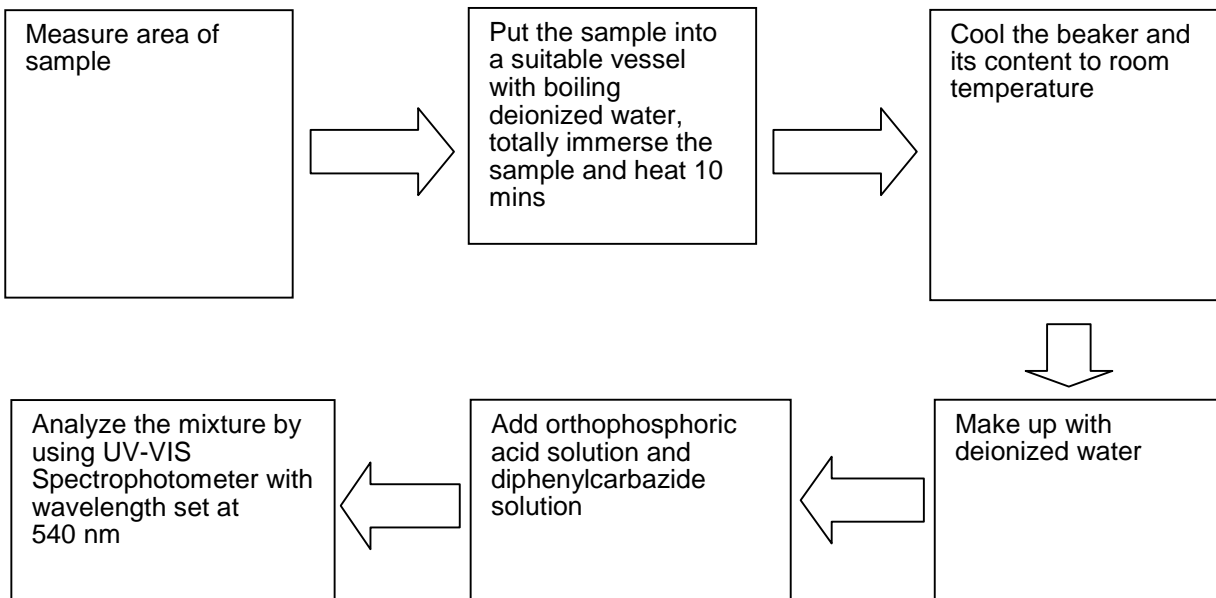


Tests Conducted

2. Test for Hg Content



3. Test for Chromium (VI) (Cr⁶⁺) Content (Boiling Water Extraction)



End of report



Test Report

Number: SZHH0059958001

Applicant: LITTELFUSE, INC
8755 WEST HIGGINS ROAD SUITE
500CHICAGO IL 60631 USA

Date: Jun 21, 2011

Attn: KRISTEEN BACILA/ARSENIO CESISTA JR.

Sample Description:
One (1) submitted sample said to be **red powder (Epoxy Resin PCE2104A Red)**.
Part no.: MS044.



Tests conducted:
As requested by the applicant, refer to attached page(s) for details.

Authorized by:
For Intertek Testing Services
Shenzhen Ltd.



Ben N.L. Lin
General Manager



Test Report

Number: SZHH0059958001

Tests Conducted

1 RoHS Chemical Test

(A) Test Result Summary:

Testing Item	Result
Cadmium (Cd) Content (mg/kg)	ND(<2)
Lead (Pb) Content (mg/kg)	ND(<2)
Mercury (Hg) Content (mg/kg)	ND(<2)
Chromium (VI)(Cr ⁶⁺) Content (mg/kg)	ND(<1)
Polybrominated Biphenyls (PBBs)(mg/kg)	
Monobromobiphenyl (MonoBB)	ND(<5)
Dibromobiphenyl (DiBB)	ND(<5)
Tribromobiphenyl (TriBB)	ND(<5)
Tetrabromobiphenyl (TetraBB)	ND(<5)
Pentabromobiphenyl (PentaBB)	ND(<5)
Hexabromobiphenyl (HexaBB)	ND(<5)
Heptabromobiphenyl (HeptaBB)	ND(<5)
Octabromobiphenyl (OctaBB)	ND(<5)
Nonabromobiphenyl (NonaBB)	ND(<5)
Decabromobiphenyl (DecaBB)	ND(<5)
Polybrominated Diphenyl Ethers (PBDEs)(mg/kg)	
Monobromodiphenyl Ether (MonoBDE)	ND(<5)
Dibromodiphenyl Ether (DiBDE)	ND(<5)
Tribromodiphenyl Ether (TriBDE)	ND(<5)
Tetrabromodiphenyl Ether (TetraBDE)	ND(<5)
Pentabromodiphenyl Ether (PentaBDE)	ND(<5)
Hexabromodiphenyl Ether (HexaBDE)	ND(<5)
Heptabromodiphenyl Ether (HeptaBDE)	ND(<5)
Octabromodiphenyl Ether (OctaBDE)	ND(<5)
Nonabromodiphenyl Ether (NonaBDE)	ND(<5)
Decabromodiphenyl Ether (DecaBDE)	ND(<5)

Chemist: Wang Haijun/Tang Wenming

mg/kg = milligram per kilogram = ppm

< = Less than

ND = Not detected



Test Report

Number: SZHH0059958001

Tests Conducted

(B) RoHS Requirement:

Restricted Substances	Limits
Cadmium (Cd)	0.01% (100 ppm)
Lead (Pb)	0.1% (1000 ppm)
Mercury (Hg)	0.1% (1000 ppm)
Chromium (VI) (Cr ⁶⁺)	0.1% (1000 ppm)
Polybrominated Biphenyls (PBBs)	0.1% (1000 ppm)
Polybrominated Diphenyl Ethers (PBDEs)	0.1% (1000 ppm)

The above limits were quoted from 2002/95/EC and amendment 2005/618/EC for homogeneous material.

(C) Test Method:

Testing Item	Testing Method	Reporting Limit
Cadmium (Cd) Content	With reference to IEC 62321 Edition 1.0:2008, by acid digestion and determined by ICP - OES	2 mg/kg
Lead (Pb) Content	With reference to IEC 62321 Edition 1.0:2008, by acid digestion and determined by ICP - OES	2 mg/kg
Mercury (Hg) Content	With reference to IEC 62321 Edition 1.0:2008, by acid digestion and determined by ICP - OES	2 mg/kg
Chromium (VI)(Cr ⁶⁺) Content	With reference to IEC 62321 Edition 1.0:2008, by alkaline digestion and determined by UV-VIS Spectrophotometer	1 mg/kg
Polybrominated Biphenyls (PBBs)& Polybrominated Diphenyl Ethers (PBDEs)	With reference to IEC 62321 Edition 1.0:2008, by solvent extraction and determined by GC/MS and further HPLC confirmation when necessary	5 mg/kg

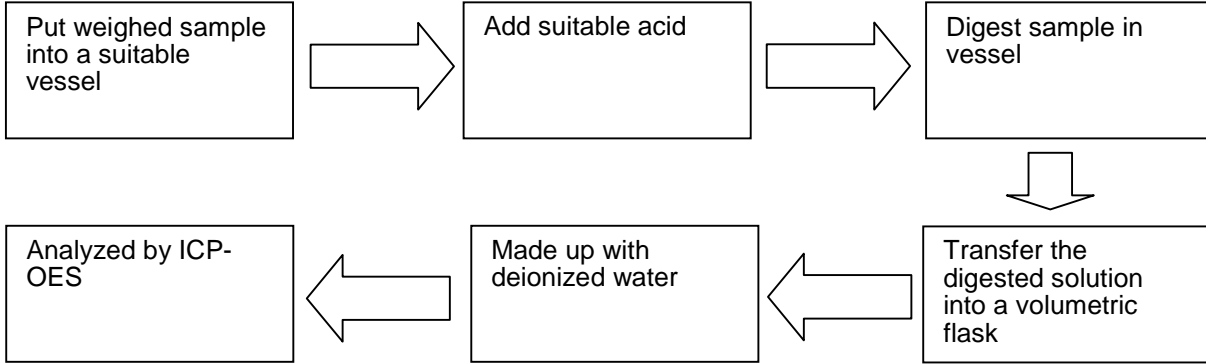
Date sample received: Jun 13, 2011 & Jun 17, 2011

Testing period: Jun 13, 2011 to Jun 20, 2011

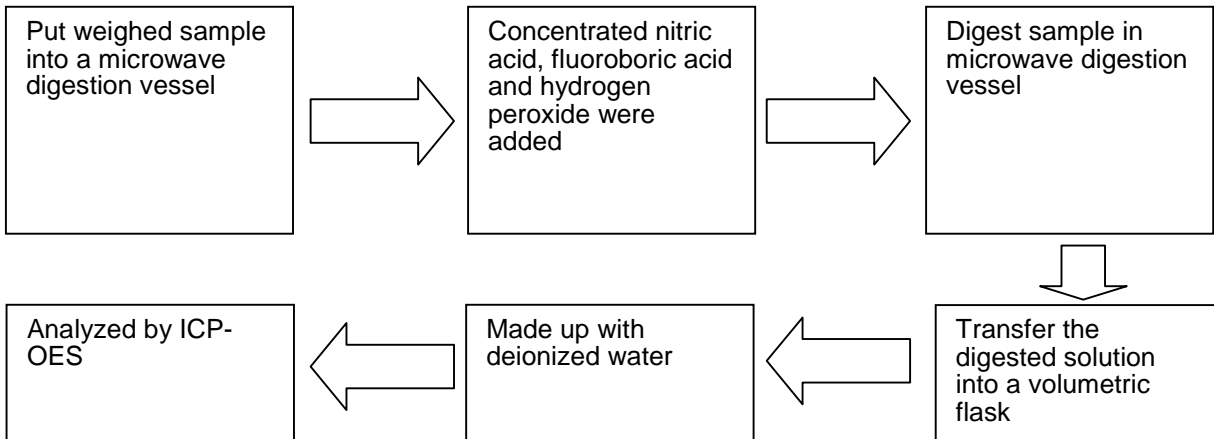
Tests Conducted

(D) Measurement Flowchart:

1. Test for Cd/Pb Contents

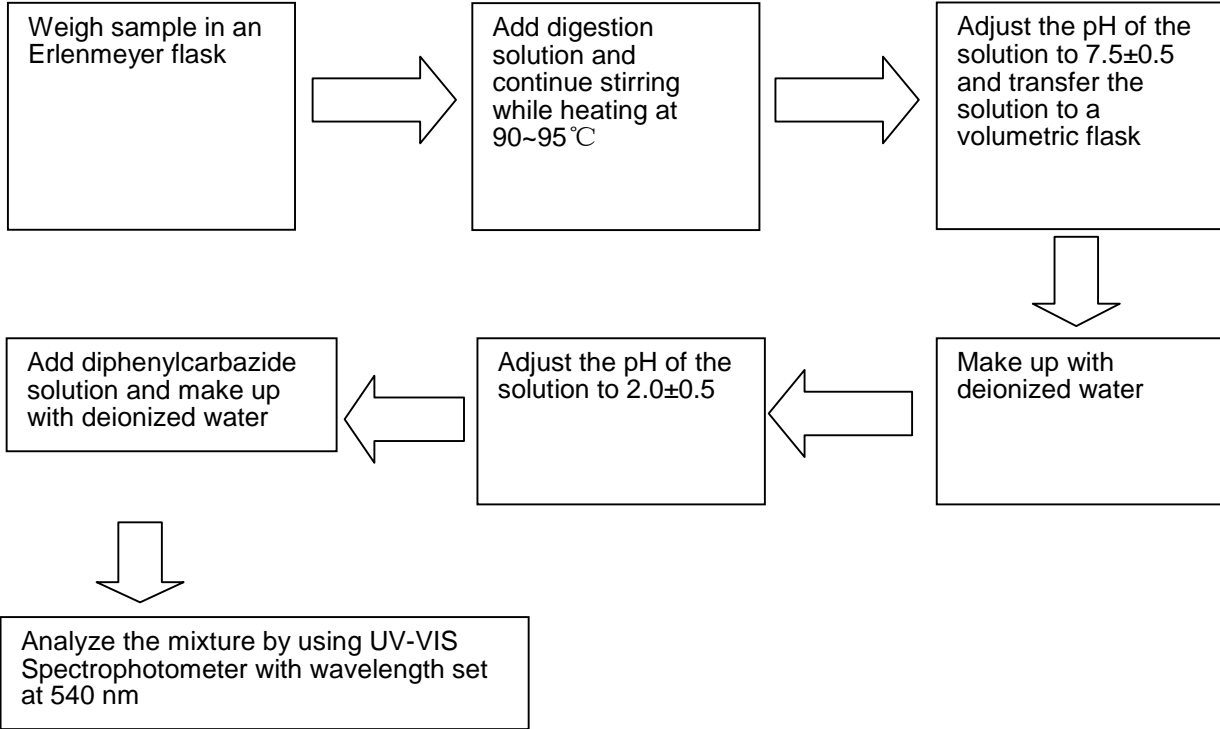


2. Test for Hg Content

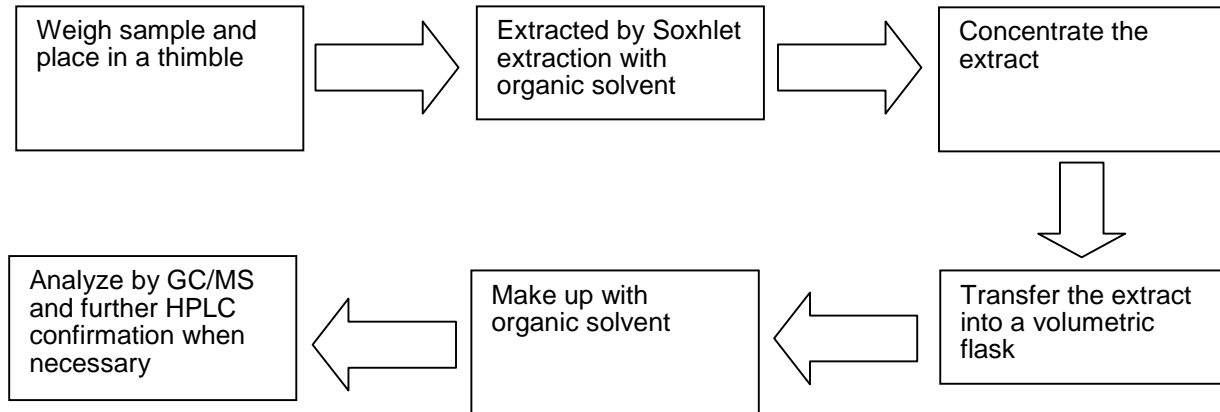


Tests Conducted

3. Test for Chromium (VI) (Cr^{6+}) Content (Alkaline Digestion)



4. Test for PBBs/PBDEs Contents





Test Report

Number: SZHH0059958001

Tests Conducted

2 Halogen Content

(I) Test Result Summary:

<u>Testing Item</u>	<u>Result (mg/kg)</u>
Fluorine (F) Content	80
Chlorine (Cl) Content	700
Bromine (Br) Content	50000
Iodine (I) Content	ND

mg/kg= milligram per kilogram = ppm
ND= Not detected

(II) Test Method:

<u>Testing Item</u>	<u>Testing Method</u>	<u>Reporting Limit</u>
Halogen (F, Cl, Br, I) Content	With reference to IEC 61189-2:2006, by combustion flask and determined by Ion Chromatography	50 mg/kg

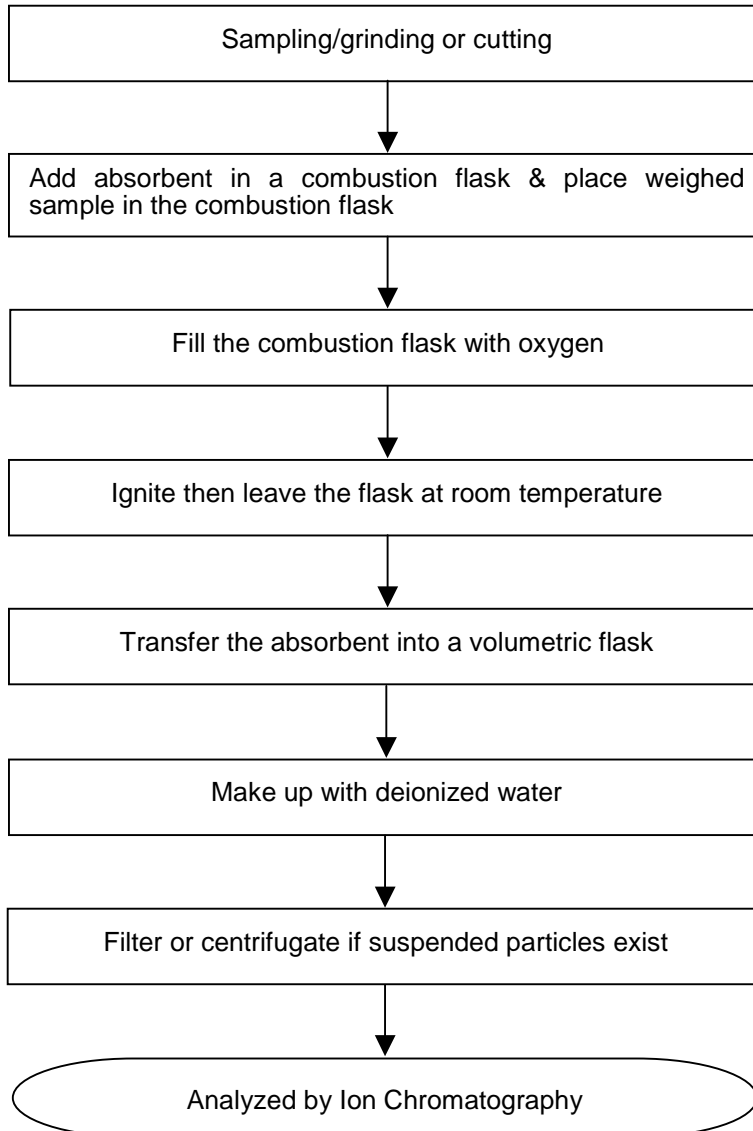
Reporting limit = Quantitation limit of analyte in sample

Date sample received : Jun 13, 2011
Testing period : Jun 13, 2011 to Jun 20, 2011

Tests Conducted

(III) Measurement Flowchart:

Test for Halogen Content (Reference Method: IEC 61189-2 Test 2C12)



End of report



Test Report

Number: SZHH0061988301

Applicant: LITTELFUSE, INC
8755 WEST HIGGINS ROAD SUITE
500 CHICAGO IL 60631 USA

Date: Aug 19, 2011

Attn: KRISTEEN BACILA/ARSENIO CESISTA JR.

Sample Description:

One (1) submitted sample said to be **black material (industrial coating resin)**.



Tests conducted:

As requested by the applicant, refer to attached page(s) for details.

Authorized by:
For Intertek Testing Services
Shenzhen Ltd.



Ben N.L. Lin
General Manager



Test Report

Number: SZHH0061988301

Tests Conducted

1 RoHS Chemical Test

(A) Test Result Summary:

Testing Item	Result
Cadmium (Cd) Content (mg/kg)	ND(<2)
Lead (Pb) Content (mg/kg)	ND(<2)
Mercury (Hg) Content (mg/kg)	ND(<2)
Chromium (VI)(Cr ⁶⁺) Content (mg/kg)	ND(<1)
Polybrominated Biphenyls (PBBs)(mg/kg)	
Monobromobiphenyl (MonoBB)	ND(<5)
Dibromobiphenyl (DiBB)	ND(<5)
Tribromobiphenyl (TriBB)	ND(<5)
Tetrabromobiphenyl (TetraBB)	ND(<5)
Pentabromobiphenyl (PentaBB)	ND(<5)
Hexabromobiphenyl (HexaBB)	ND(<5)
Heptabromobiphenyl (HeptaBB)	ND(<5)
Octabromobiphenyl (OctaBB)	ND(<5)
Nonabromobiphenyl (NonaBB)	ND(<5)
Decabromobiphenyl (DecaBB)	ND(<5)
Polybrominated Diphenyl Ethers (PBDEs)(mg/kg)	
Monobromodiphenyl Ether (MonoBDE)	ND(<5)
Dibromodiphenyl Ether (DiBDE)	ND(<5)
Tribromodiphenyl Ether (TriBDE)	ND(<5)
Tetrabromodiphenyl Ether (TetraBDE)	ND(<5)
Pentabromodiphenyl Ether (PentaBDE)	ND(<5)
Hexabromodiphenyl Ether (HexaBDE)	ND(<5)
Heptabromodiphenyl Ether (HeptaBDE)	ND(<5)
Octabromodiphenyl Ether (OctaBDE)	ND(<5)
Nonabromodiphenyl Ether (NonaBDE)	ND(<5)
Decabromodiphenyl Ether (DecaBDE)	ND(<5)

Chemist: Wang Haijun/Tang Wenming

mg/kg = milligram per kilogram = ppm

< = Less than

ND = Not detected



Test Report

Number: SZHH0061988301

Tests Conducted

(B) RoHS Requirement:

Restricted Substances	Limits
Cadmium (Cd)	0.01% (100 ppm)
Lead (Pb)	0.1% (1000 ppm)
Mercury (Hg)	0.1% (1000 ppm)
Chromium (VI) (Cr ⁶⁺)	0.1% (1000 ppm)
Polybrominated Biphenyls (PBBs)	0.1% (1000 ppm)
Polybrominated Diphenyl Ethers (PBDEs)	0.1% (1000 ppm)

The above limits were quoted from 2002/95/EC and amendment 2005/618/EC for homogeneous material.

(C) Test Method:

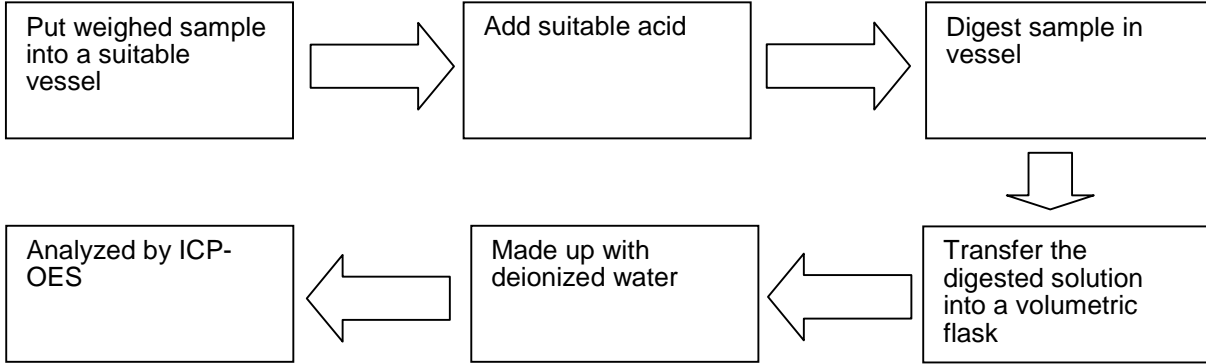
Testing Item	Testing Method	Reporting Limit
Cadmium (Cd) Content	With reference to IEC 62321 Edition 1.0:2008, by acid digestion and determined by ICP - OES	2 mg/kg
Lead (Pb) Content	With reference to IEC 62321 Edition 1.0:2008, by acid digestion and determined by ICP - OES	2 mg/kg
Mercury (Hg) Content	With reference to IEC 62321 Edition 1.0:2008, by acid digestion and determined by ICP - OES	2 mg/kg
Chromium (VI)(Cr ⁶⁺) Content	With reference to IEC 62321 Edition 1.0:2008, by alkaline digestion and determined by UV-VIS Spectrophotometer	1 mg/kg
Polybrominated Biphenyls (PBBs)& Polybrominated Diphenyl Ethers (PBDEs)	With reference to IEC 62321 Edition 1.0:2008, by solvent extraction and determined by GC/MS and further HPLC confirmation when necessary	5 mg/kg

Date sample received: Aug 12, 2011
Testing period: Aug 12, 2011 to Aug 15, 2011

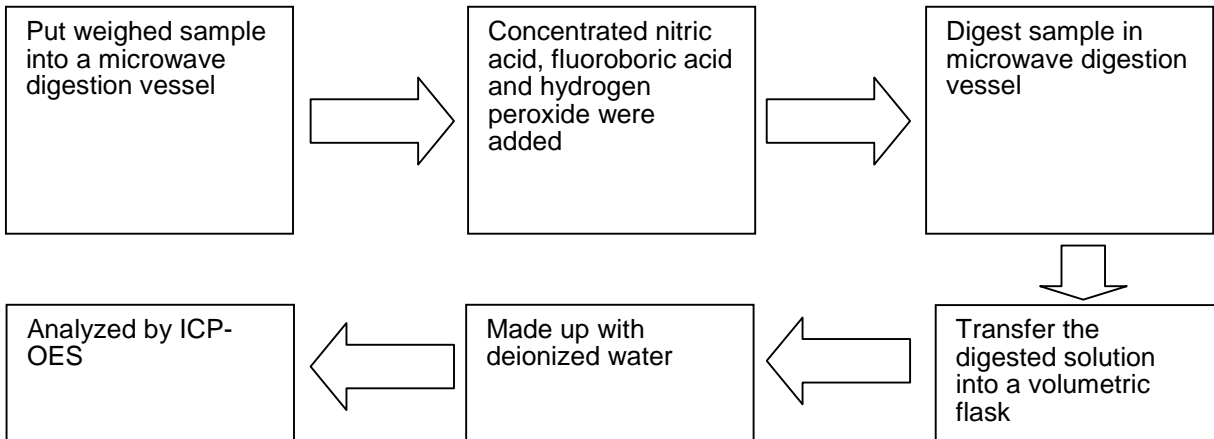
Tests Conducted

(D) Measurement Flowchart:

1. Test for Cd/Pb Contents

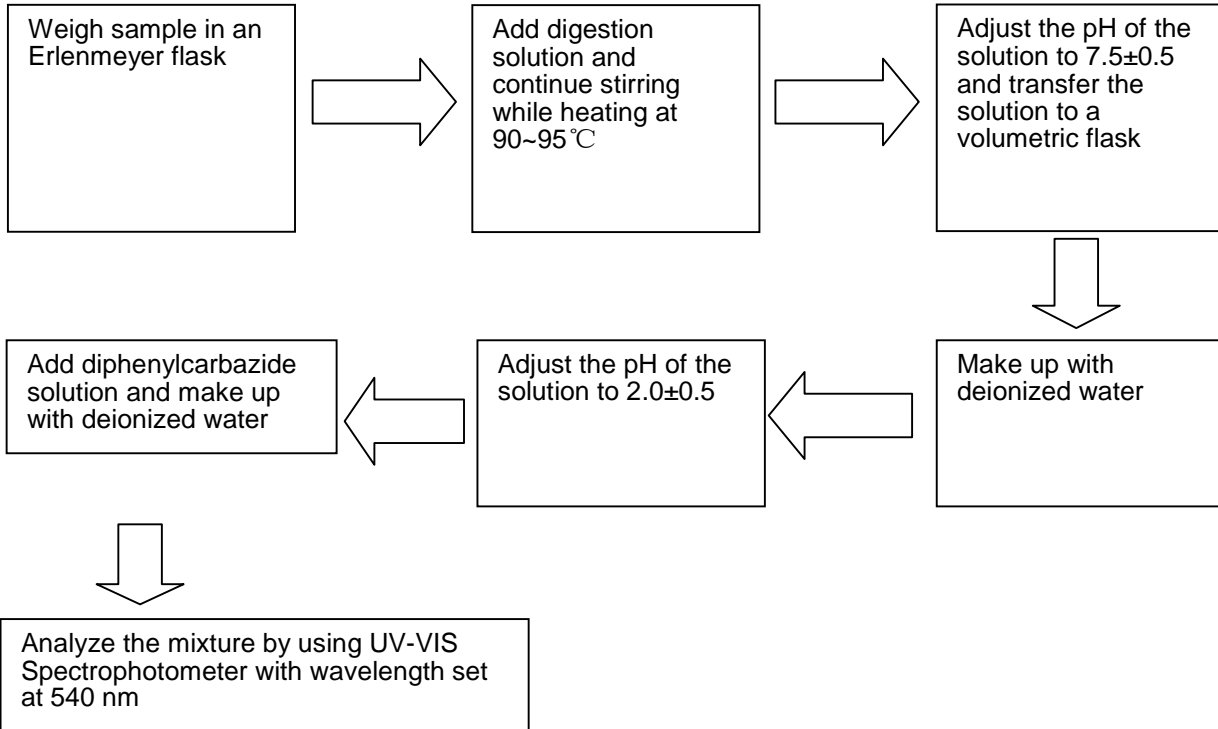


2. Test for Hg Content

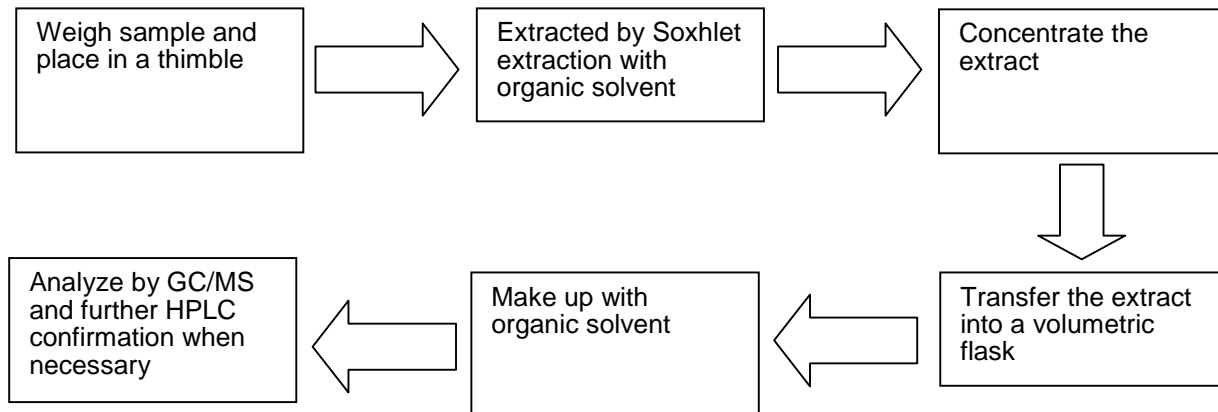


Tests Conducted

3. Test for Chromium (VI) (Cr^{6+}) Content (Alkaline Digestion)



4. Test for PBBs/PBDEs Contents





Test Report

Number: SZHH0061988301

Tests Conducted

2 Halogen Content

(I) Test Result Summary:

<u>Testing Item</u>	<u>Result (mg/kg)</u>
Fluorine (F) Content	ND
Chlorine (Cl) Content	155
Bromine (Br) Content	ND
Iodine (I) Content	ND

mg/kg= milligram per kilogram = ppm
ND= Not detected

(II) Test Method:

<u>Testing Item</u>	<u>Testing Method</u>	<u>Reporting Limit</u>
Halogen (F, Cl, Br, I) Content	With reference to BS EN 14582:2007, by calorimetric bomb and determined by Ion Chromatography	50 mg/kg

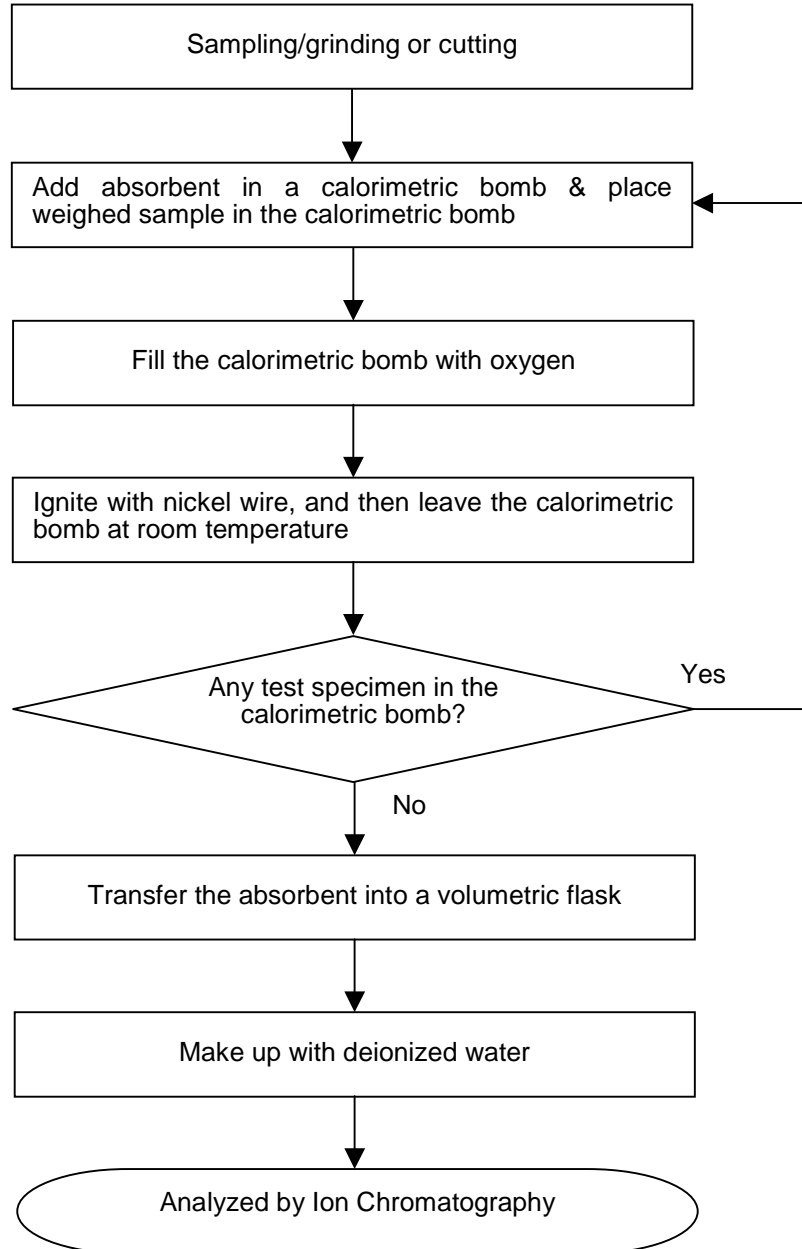
Reporting limit = Quantitation limit of analyte in sample

Date sample received : Aug 12, 2011
Testing period : Aug 12, 2011 to Aug 17, 2011

Tests Conducted

(III) Measurement Flowchart:

Test for Halogen Content (Reference Method: BS EN 14582:2007)



End of report



Test Report

Number: SZHH00651966

Applicant: LITTELFUSE, INC
8755 WEST HIGGINS ROAD SUITE
500CHICAGO IL 60631 USA

Date: Dec 15, 2011

Attn: KRISTEEN BACILA/ARSENIO CESISTA JR.

Sample Description:
One (1) submitted sample said to be **base & lid**.
Tested components:
(1) red plastic. (base)
(2) red plastic. (lid)



Tests conducted:
As requested by the applicant, refer to attached page(s) for details.

To be continued

Authorized by:
For Intertek Testing Services
Shenzhen Ltd.



Ben N.L. Lin
General Manager



Test Report

Number: SZHH00651966

Conclusion:

<u>Tested Sample</u>	<u>Standard</u>	<u>Result</u>
Submitted sample	Phthalates content requirement in Annex XVII Items 51 & 52 of the REACH Regulation (EC) No. 1907/2006 & Amendment No. 552/2009 (formerly known as Directive 2005/84/EC) (DEHP, DBP & BBP)	Pass
	<u>Test Item</u> Hexabromocyclododecane Content	See Test Conducted
	Halogen Content	See Test Conducted
	Restriction of the use of certain hazardous substance in electrical electronic and equipment (RoHS Direction 2002/95/EC and amendment 2005/618/EC)	See Test Conducted

 Remark As requested by the applicant, tested components (1) and (2) were tested together.

Authorized by:
 For Intertek Testing Services
 Shenzhen Ltd.



Ben N.L. Lin
 General Manager



Test Report

Number: SZHH00651966

Tests Conducted

1 RoHS Chemical Test

(A) Test Result Summary:

Testing Item	Result
	(1/2)
Cadmium (Cd) Content (mg/kg)	ND(<2)
Lead (Pb) Content (mg/kg)	47
Mercury (Hg) Content (mg/kg)	ND(<2)
Chromium (VI)(Cr ⁶⁺) Content (mg/kg)	ND(<1)
Polybrominated Biphenyls (PBBs)(mg/kg)	
Monobromobiphenyl (MonoBB)	ND(<5)
Dibromobiphenyl (DiBB)	ND(<5)
Tribromobiphenyl (TriBB)	ND(<5)
Tetrabromobiphenyl (TetraBB)	ND(<5)
Pentabromobiphenyl (PentaBB)	ND(<5)
Hexabromobiphenyl (HexaBB)	ND(<5)
Heptabromobiphenyl (HeptaBB)	ND(<5)
Octabromobiphenyl (OctaBB)	ND(<5)
Nonabromobiphenyl (NonaBB)	ND(<5)
Decabromobiphenyl (DecaBB)	ND(<5)
Polybrominated Diphenyl Ethers (PBDEs)(mg/kg)	
Monobromodiphenyl Ether (MonoBDE)	ND(<5)
Dibromodiphenyl Ether (DiBDE)	ND(<5)
Tribromodiphenyl Ether (TriBDE)	ND(<5)
Tetrabromodiphenyl Ether (TetraBDE)	ND(<5)
Pentabromodiphenyl Ether (PentaBDE)	ND(<5)
Hexabromodiphenyl Ether (HexaBDE)	ND(<5)
Heptabromodiphenyl Ether (HeptaBDE)	ND(<5)
Octabromodiphenyl Ether (OctaBDE)	ND(<5)
Nonabromodiphenyl Ether (NonaBDE)	ND(<5)
Decabromodiphenyl Ether (DecaBDE)	ND(<5)

Chemist: Wang Haijun/Zeng Guoliang

mg/kg = milligram per kilogram = ppm
< = Less than
ND = Not detected

Tested components:

- (1) Red plastic (based of mark as #1).
- (2) Red plastic (lid of mark as #1).

Test Report

Number: SZHH00651966

Tests Conducted

(B) RoHS Requirement:

Restricted Substances	Limits
Cadmium (Cd)	0.01% (100 mg/kg)
Lead (Pb)	0.1% (1000 mg/kg)
Mercury (Hg)	0.1% (1000 mg/kg)
Chromium (VI) (Cr ⁶⁺)	0.1% (1000 mg/kg)
Polybrominated Biphenyls (PBBs)	0.1% (1000 mg/kg)
Polybrominated Diphenyl Ethers (PBDEs)	0.1% (1000 mg/kg)

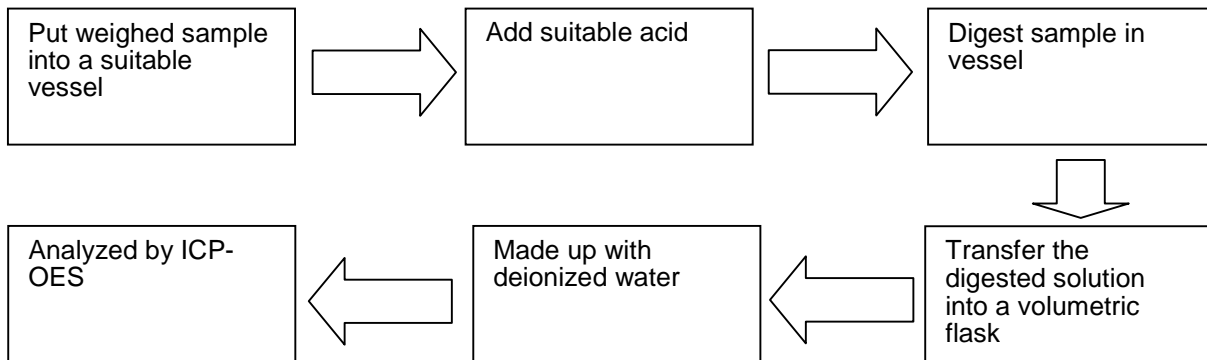
The above limits were quoted from 2002/95/EC and amendment 2005/618/EC for homogeneous material.

(C) Test Method:

Testing Item	Testing Method	Reporting Limit
Cadmium (Cd) Content	With reference to IEC 62321 Edition 1.0:2008, by acid digestion and determined by ICP - OES	2 mg/kg
Lead (Pb) Content	With reference to IEC 62321 Edition 1.0:2008, by acid digestion and determined by ICP - OES	2 mg/kg
Mercury (Hg) Content	With reference to IEC 62321 Edition 1.0:2008, by acid digestion and determined by ICP - OES	2 mg/kg
Chromium (VI)(Cr ⁶⁺) Content	With reference to IEC 62321 Edition 1.0:2008, by alkaline digestion and determined by UV-VIS Spectrophotometer	1 mg/kg
Polybrominated Biphenyls (PBBs)& Polybrominated Diphenyl Ethers (PBDEs)	With reference to IEC 62321 Edition 1.0:2008, by solvent extraction and determined by GC/MS and further HPLC confirmation when necessary	5 mg/kg

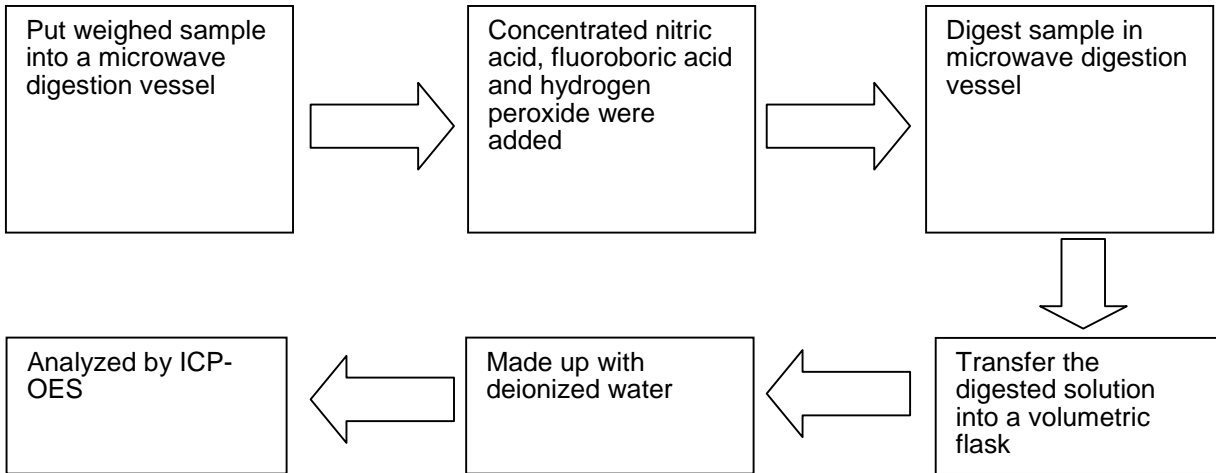
Date sample received: Dec 08, 2011
 Testing period: Dec 08, 2011 to Dec 13, 2011

(D) Measurement Flowchart:
 1. Test for Cd/Pb Contents

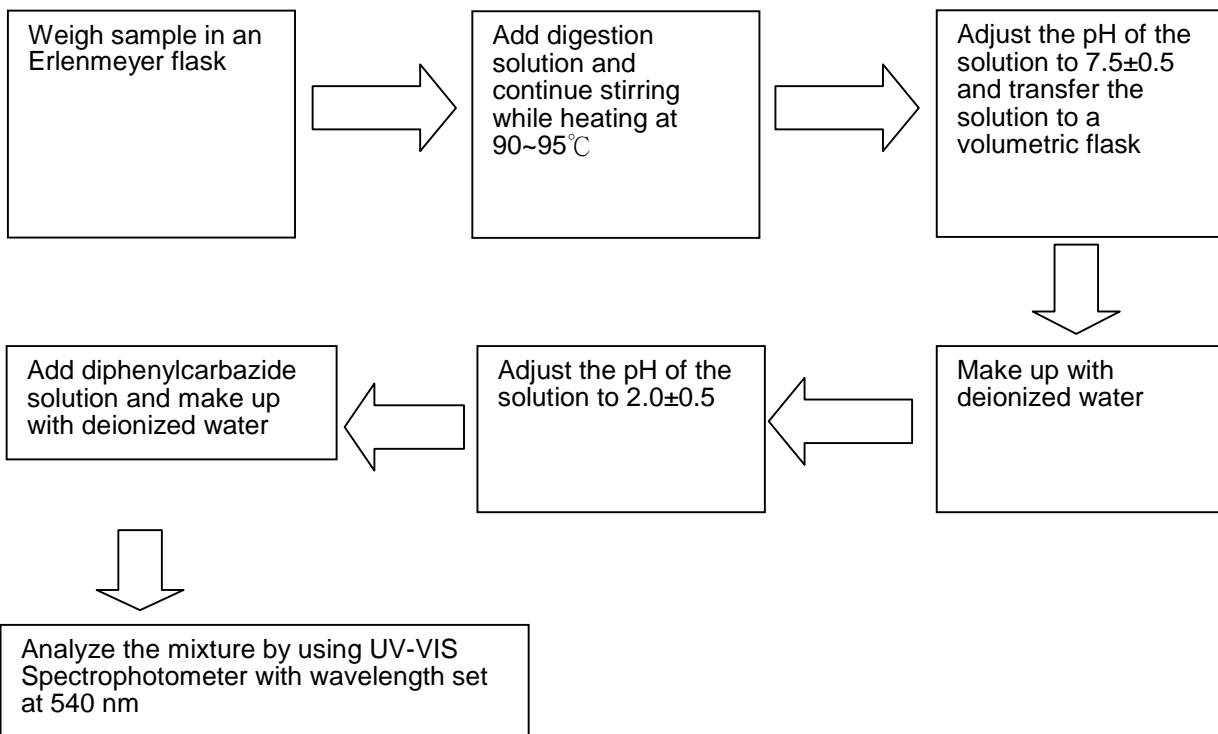


Tests Conducted

2. Test for Hg Content



3. Test for Chromium (VI) (Cr⁶⁺) Content (Alkaline Digestion)

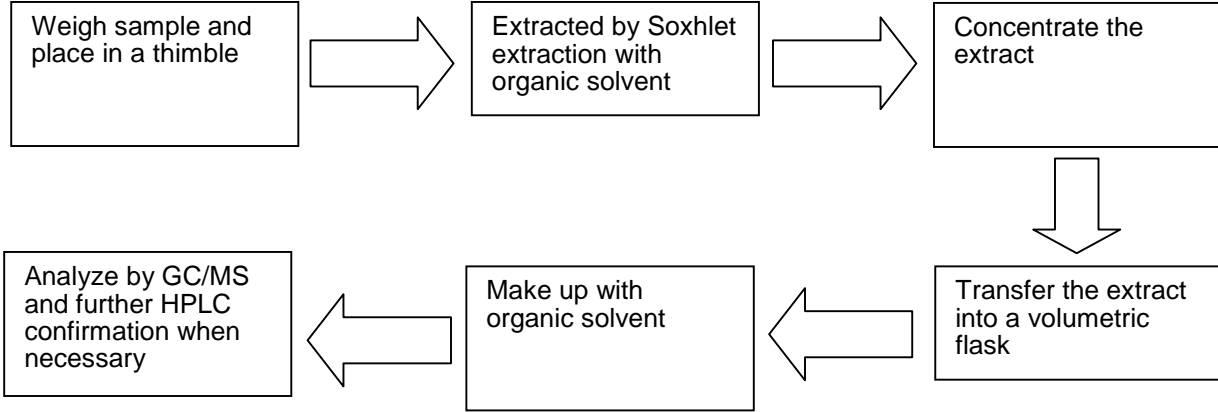


Test Report

Number: SZHH00651966

Tests Conducted

4. Test for PBBs/PBDEs Contents



2 Halogen Content

(I) Test Result Summary:

Testing Item	Result (mg/kg)
	(1/2)
Fluorine (F) Content	597
Chlorine (Cl) Content	ND
Bromine (Br) Content	41600
Iodine (I) Content	ND

mg/kg= milligram per kilogram = ppm
 ND= Not detected

Remark: As requested by the applicant, tested components (1) and (2) were tested together.

(II) Test Method:

Testing Item	Testing Method	Reporting Limit
Halogen (F, Cl, Br, I) Content	With reference to BS EN 14582:2007, by calorimetric bomb and determined by Ion Chromatography	50 mg/kg

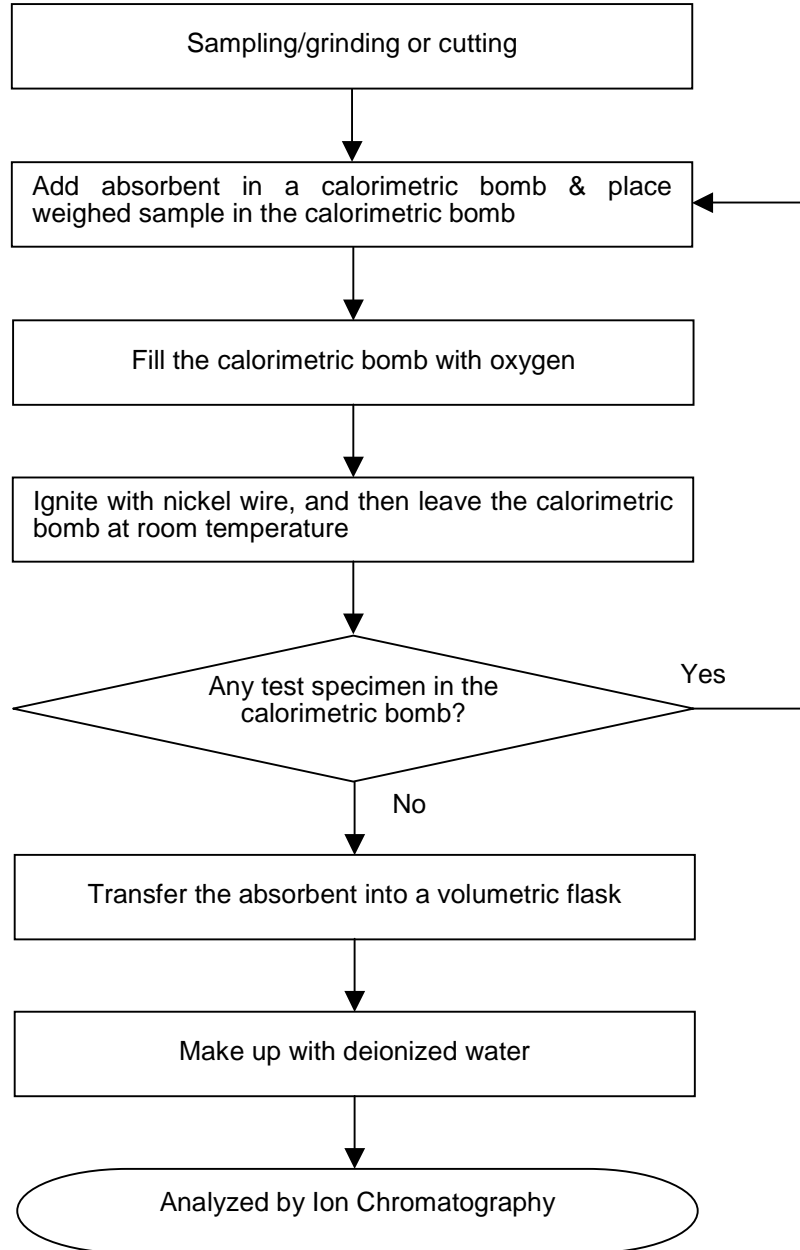
Reporting limit = Quantitation limit of analyte in sample

Date sample received: Dec 08, 2011
 Testing period: Dec 08, 2011 to Dec 14, 2011

Tests Conducted

(III) Measurement Flowchart:

Test for Halogen Content (Reference Method: BS EN 14582:2007)





Test Report

Number: SZHH00651966

Tests Conducted

3 Phthalate Content

With reference to EN14372, by Gas chromatographic-Mass Spectrometric (GC-MS) analysis.

	<u>Result (%)</u>
	<u>(1/2)</u>
Dibutyl phthalate (DBP)	<0.01
Di-(2-ethyl hexyl) phthalate (DEHP)	<0.01
Benzyl butyl phthalate (BBP)	<0.01
Sum of three phthalates	<0.01
Limit	0.1 %

The above limit was quoted according to Annex XVII Items 51 & 52 of the REACH Regulation (EC) No. 1907/2006 & Amendment No. 552/2009(formerly known as Directive 2005/84/EC) for phthalate content in toys and children articles.

< = Less than

As per client's request, only DBP, DEHP and BBP were tested for the components (1) to (2) of the submitted sample.

Tested components:

- (1) Red plastic (based of mark as #1).
- (2) Red plastic (lid of mark as #1).

Date sample received : Dec 08, 2011
Testing period : Dec 08, 2011 to Dec 12, 2011

4 Hexabromocyclododecane (HBCDD) Content:

By solvent extraction followed by Gas Chromatographic - Mass Spectrometric (GC-MS) analysis.

<u>Tested Sample</u>	<u>Result (mg/kg)</u>
(1/2)	<10

< = Less than
mg/kg =milligram per kilogram

Tested components:

- (1) Red plastic (based of mark as #1).
- (2) Red plastic (lid of mark as #1).

Date sample received: Dec 08, 2011
Testing period: Dec 08, 2011 to Dec 10, 2011

End of report



Test Report

Number: SZHH00651883

Applicant: LITTELFUSE, INC
8755 WEST HIGGINS ROAD SUITE
500CHICAGO IL 60631 USA

Date: Dec 13, 2011

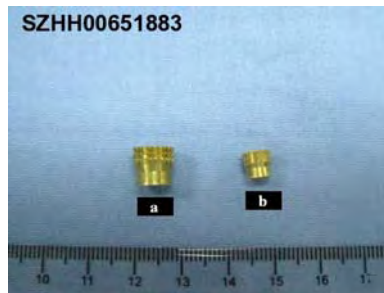
Attn: KRISTEEN BACILA/ARSENIO CESISTA JR.

Sample Description:

One (1) submitted sample said to be **copper screw**.

Tested components:

- (a) copper color metal. (big)
- (b) copper color metal. (small)



Tests conducted:

As requested by the applicant, refer to attached page(s) for details.

Remark : As requested by the applicant, tested components (a) and (b) were tested together.

Authorized by:
For Intertek Testing Services
Shenzhen Ltd.



Ben N.L. Lin
General Manager



Test Report

Number: SZHH00651883

Tests Conducted

RoHS Chemical Test

(A) Test Result Summary:

Testing Item	Result
	(a/b)
Cadmium (Cd) Content (mg/kg)	35
Lead (Pb) Content (mg/kg)	27600
Mercury (Hg) Content (mg/kg)	ND(<2)
Chromium (VI)(Cr ⁶⁺) Result (By Boiling Water Extraction on Metal)(mg/kg with 50cm ²)	Negative (<0.02)

Chemist: Wang Haijun

mg/kg = milligram per kilogram = ppm
mg/kg with 50cm² = milligram per kilogram with 50 square centimetre
< = Less than
ND = Not detected

Positive = A positive test result indicated the presence of Cr(VI) at the time of testing, equal to or greater than threshold of 1 mg/kg for spot test procedure or 0.02 mg/kg for boiling-water-extraction procedures with a sample surface area of 50cm² used. However, it shall not be interpreted as the Cr(VI) concentration in the coating layer of the sample and should not be used as a method detection limit for this qualitative test.

Negative = A negative test result indicated above positive observation was not found at the time of testing. When the spot-test showed a negative result, the boiling-water-extraction procedure shall be used to verify the result.

(B) RoHS Requirement:

Restricted Substances	Limits
Cadmium (Cd)	0.01% (100 mg/kg)
Lead (Pb)	0.1% (1000 mg/kg)
Mercury (Hg)	0.1% (1000 mg/kg)
Chromium (VI) (Cr ⁶⁺)	0.1% (1000 mg/kg)

The above limits were quoted from 2002/95/EC and amendment 2005/618/EC for homogeneous material.

Test Report

Number: SZHH00651883

Tests Conducted

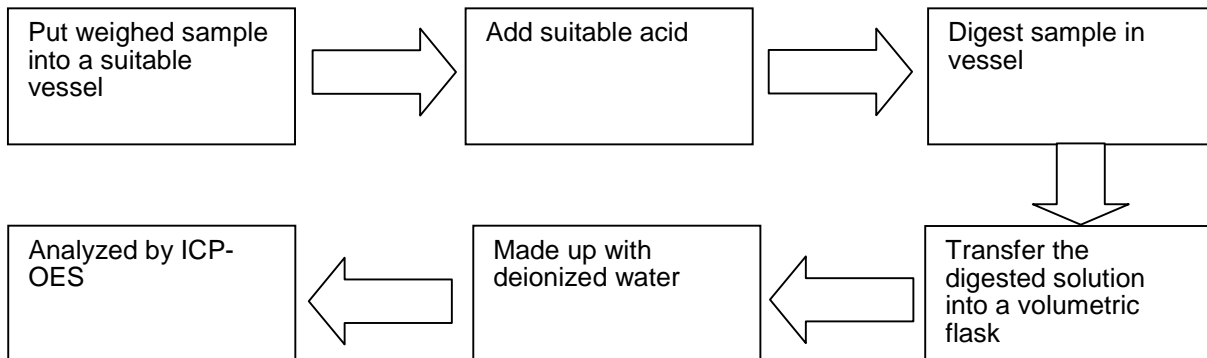
(C) Test Method:

Testing Item	Testing Method	Reporting Limit
Cadmium (Cd) Content	With reference to IEC 62321 Edition 1.0:2008, by acid digestion and determined by ICP - OES	2 mg/kg
Lead (Pb) Content	With reference to IEC 62321 Edition 1.0:2008, by acid digestion and determined by ICP - OES	2 mg/kg
Mercury (Hg) Content	With reference to IEC 62321 Edition 1.0:2008, by acid digestion and determined by ICP - OES	2 mg/kg
Chromium (VI) (Cr ⁶⁺) Content	With reference to IEC 62321 Edition 1.0:2008, by boiling water extraction and determined by UV-VIS Spectrophotometer	Positive/Negative (Threshold of 0.02mg/kg with 50cm ²)

Date sample received : Dec 08, 2011
 Testing period : Dec 08, 2011 to Dec 10, 2011

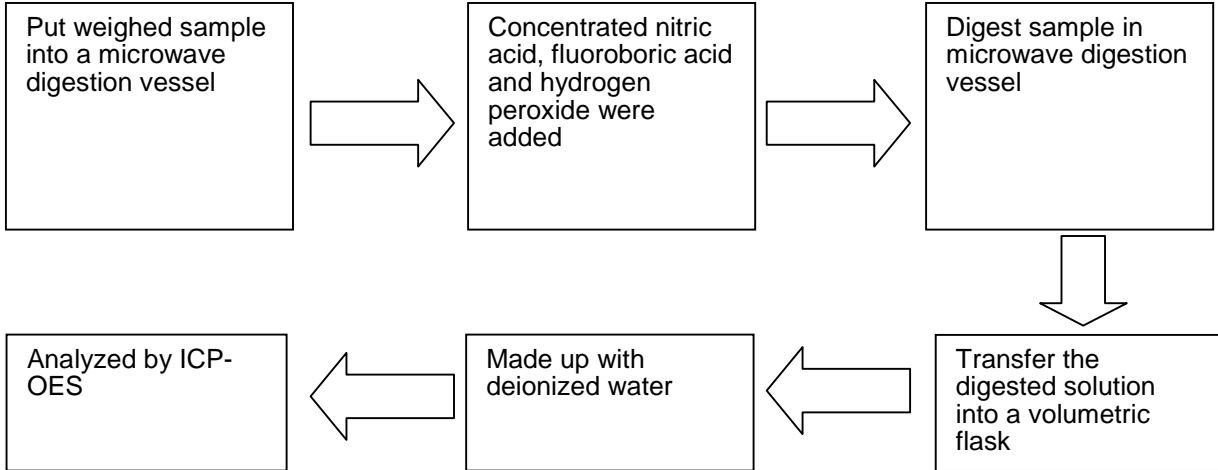
(D) Measurement Flowchart:

1. Test for Cd/Pb Contents

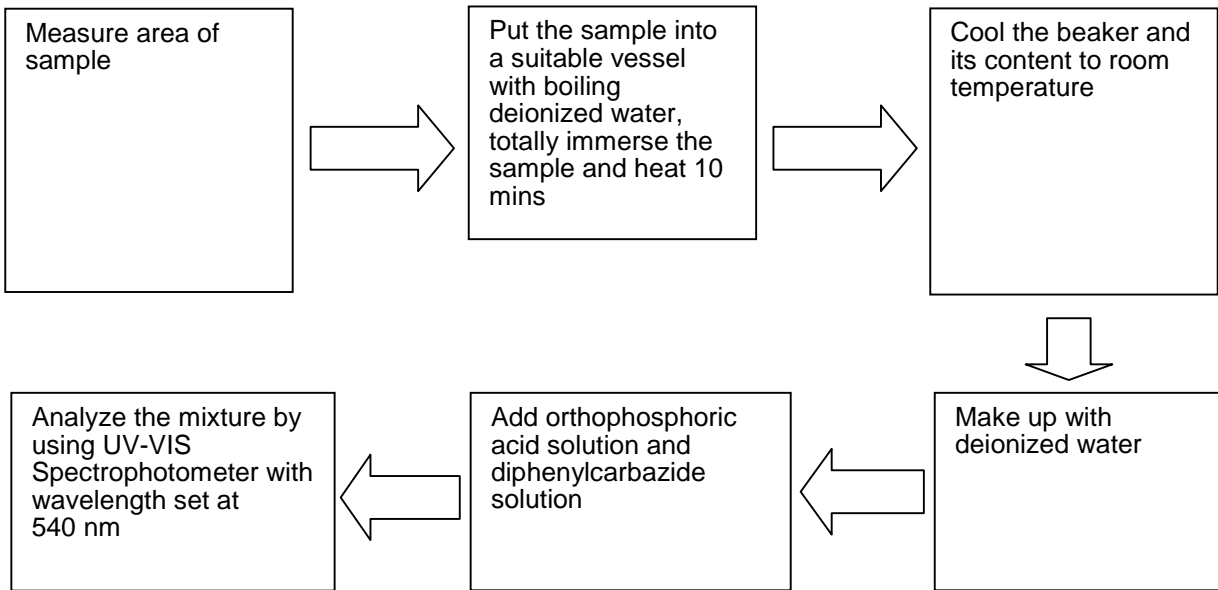


Tests Conducted

2. Test for Hg Content



3. Test for Chromium (VI) (Cr⁶⁺) Content (Boiling Water Extraction)



End of report



Test Report

Number: SZHH00651901

Applicant: LITTELFUSE, INC
8755 WEST HIGGINS ROAD SUITE
500CHICAGO IL 60631 USA

Date: Dec 13, 2011

Attn: KRISTEEN BACILA/ARSENIO CESISTA JR.

Sample Description:

One (1) submitted sample said to be **screw & washer**.

Tested components:

- (a) silver color metal. (screw)
- (b) silver color metal. (big washer)
- (c) silver color metal. (small washer)



Tests conducted:

As requested by the applicant, refer to attached page(s) for details.

Remark: As requested by the applicant, tested components (a), (b) and (c) were tested together.

Authorized by:
For Intertek Testing Services
Shenzhen Ltd.



Ben N.L. Lin
General Manager



Test Report

Number: SZHH00651901

Tests Conducted

RoHS Chemical Test

(A) Test Result Summary:

Testing Item	Result
	(a/b/c)
Cadmium (Cd) Content (mg/kg)	ND(<2)
Lead (Pb) Content (mg/kg)	ND(<2)
Mercury (Hg) Content (mg/kg)	ND(<2)
Chromium (VI)(Cr ⁶⁺) Result (By Boiling Water Extraction on Metal)(mg/kg with 50cm ²)	Negative(<0.02)

Chemist: Wang Haijun

mg/kg = milligram per kilogram = ppm
mg/kg with 50cm² = milligram per kilogram with 50 square centimetre
< = Less than
ND = Not detected

Positive = A positive test result indicated the presence of Cr(VI) at the time of testing, equal to or greater than threshold of 1 mg/kg for spot test procedure or 0.02 mg/kg for boiling-water-extraction procedures with a sample surface area of 50cm² used. However, it shall not be interpreted as the Cr(VI) concentration in the coating layer of the sample and should not be used as a method detection limit for this qualitative test.

Negative = A negative test result indicated above positive observation was not found at the time of testing. When the spot-test showed a negative result, the boiling-water-extraction procedure shall be used to verify the result.

(B) RoHS Requirement:

Restricted Substances	Limits
Cadmium (Cd)	0.01% (100 mg/kg)
Lead (Pb)	0.1% (1000 mg/kg)
Mercury (Hg)	0.1% (1000 mg/kg)
Chromium (VI) (Cr ⁶⁺)	0.1% (1000 mg/kg)

The above limits were quoted from 2002/95/EC and amendment 2005/618/EC for homogeneous material.

Test Report

Number: SZHH00651901

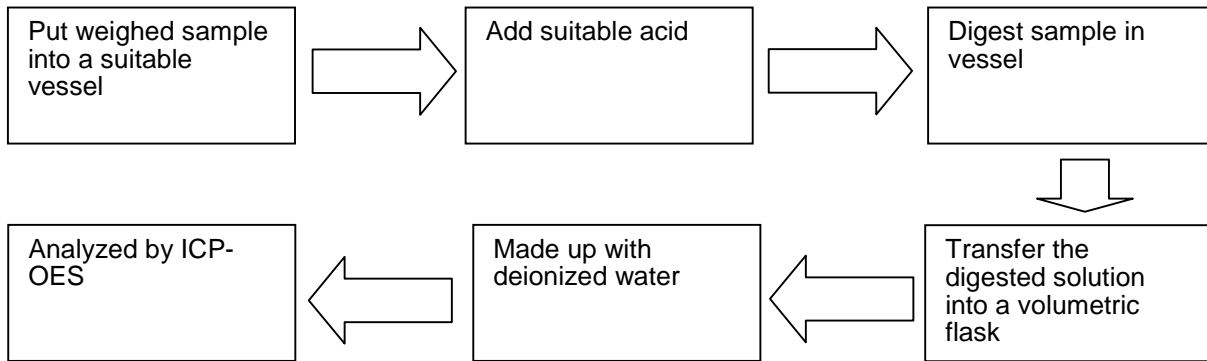
Tests Conducted

(C) Test Method:

Testing Item	Testing Method	Reporting Limit
Cadmium (Cd) Content	With reference to IEC 62321 Edition 1.0:2008, by acid digestion and determined by ICP - OES	2 mg/kg
Lead (Pb) Content	With reference to IEC 62321 Edition 1.0:2008, by acid digestion and determined by ICP - OES	2 mg/kg
Mercury (Hg) Content	With reference to IEC 62321 Edition 1.0:2008, by acid digestion and determined by ICP - OES	2 mg/kg
Chromium (VI) (Cr ⁶⁺) Content	With reference to IEC 62321 Edition 1.0:2008, by boiling water extraction and determined by UV-VIS Spectrophotometer	Positive/Negative (Threshold of 0.02mg/kg with 50cm ²)

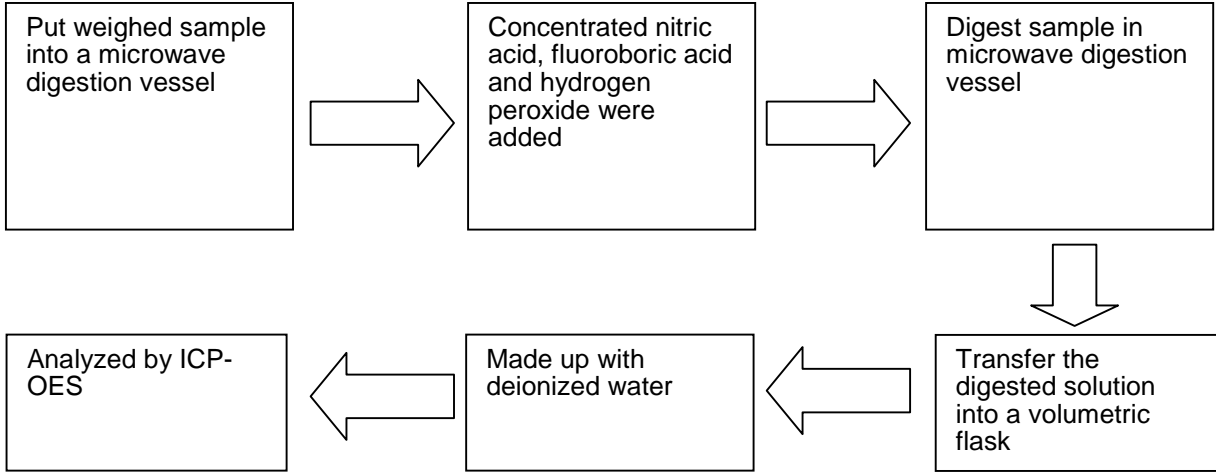
Date sample received: Dec 08, 2011
 Testing period: Dec 08, 2011 to Dec 10, 2011

(D) Measurement Flowchart:
 1. Test for Cd/Pb Contents

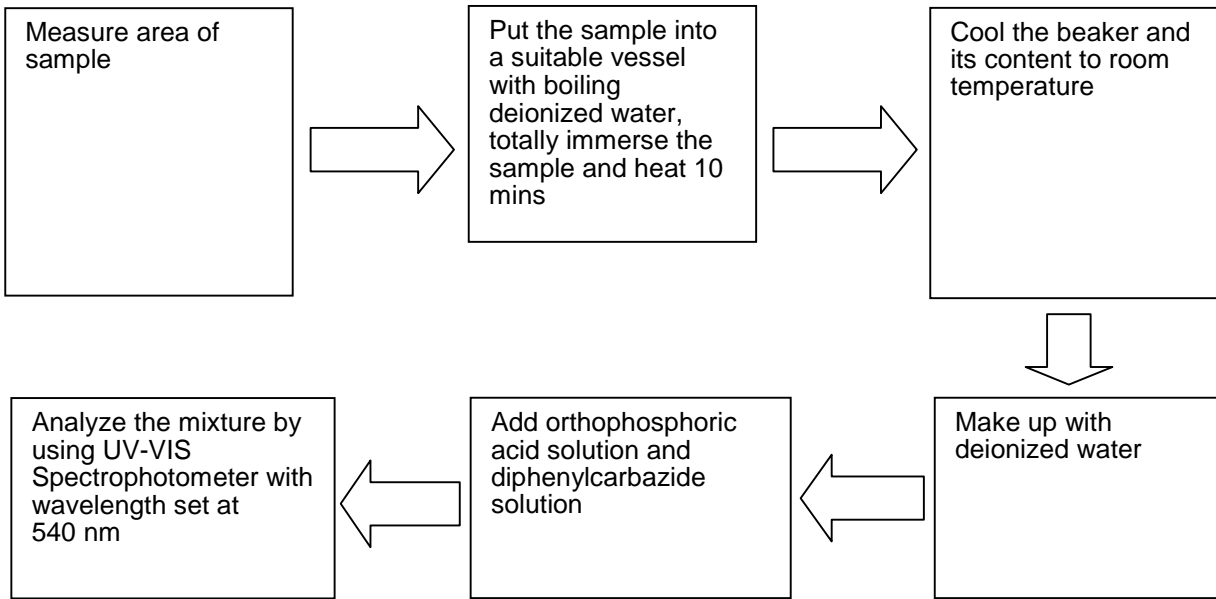


Tests Conducted

2. Test for Hg Content



3. Test for Chromium (VI) (Cr⁶⁺) Content (Boiling Water Extraction)



End of report